

ATG12 Polyclonal Antibody

Catalog number: 11264-1-AP

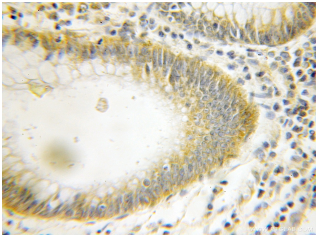
Size: 29 µg/150 µl

Source: Rabbit

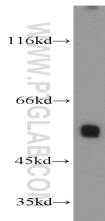
Isotype: IgG

Synonyms:

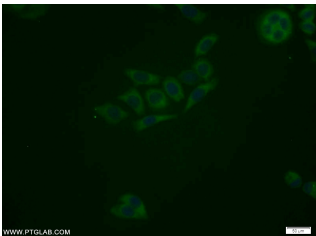
ATG12; APG12, APG12 like,
APG12L, ATG12, Autophagy
related protein 12, FBR93,
HAPG12, Ubiquitin like protein
ATG12



Immunohistochemical of paraffin-embedded human colon cancer using 11264-1-AP(ATG12 antibody) at dilution of 1:10 (under 10x lens)



PC-3 cells were subjected to SDS PAGE followed by western blot with 11264-1-AP(ATG12 antibody) at dilution of 1:800



Immunofluorescent analysis of PC-3 cells using 11264-1-AP(ATG12 Antibody) at dilution of 1:25 and Alexa Fluor 488-conjugated AffiniPure Goat Anti-Rabbit IgG(H+L)

Applications

| | |
|--------------------------|--|
| Tested applications: | ELISA, WB, IHC, IF |
| Species specificity: | Human, Mouse, Rat; other species not tested. |
| Calculated ATG12 MW: | 15 kDa |
| Observed ATG12 MW: | 48-55kd |
| Positive WB detected in | PC-3 cells, COLO 320 cells, NIH/3T3 cells |
| Positive IHC detected in | Human colon cancer tissue |
| Positive IF detected in | PC-3 cells |
| Recommended dilution: | WB: 1:500-1:5000 |
| | IHC: 1:10-1:100 |
| | IF: 1:10-1:100 |

Application key: WB = Western blotting, IHC = Immunohistochemistry, IF = Immunofluorescence, IP = Immunoprecipitation

Immunogen information

| | |
|---------------------------|---|
| Immunogen: | Ag1791 |
| GenBank accession number: | BC012266 |
| Gene ID (NCBI): | 9140 |
| Full name: | ATG12 autophagy related 12 homolog (<i>S. cerevisiae</i>) |

Product information

| | |
|----------------------|---|
| Purification method: | Antigen affinity purification |
| Storage: | PBS with 0.1% sodium azide and 50% glycerol pH 7.3. Store at -20°C. |