

DOM3Z Polyclonal Antibody

Catalog number: 11015-2-AP

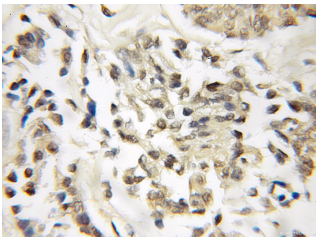
Size: 26 µg/150 µl

Source: Rabbit

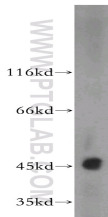
Isotype: IgG

Synonyms:

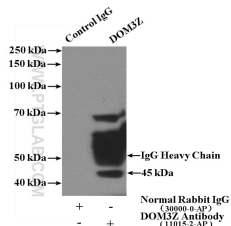
DOM3Z; Dom 3 homolog Z,
dom 3 homolog Z (C. elegans),
DOM3L, DOM3Z, NG6, Protein
Dom3Z



Immunohistochemical of paraffin-embedded human breast cancer using 11015-2-AP (DOM3Z antibody) at dilution of 1:50 (under 25x lens)



mouse testis tissue were subjected to SDS PAGE followed by western blot with 11015-2-AP (DOM3Z antibody) at dilution of 1:300



IP Result of anti-DOM3Z (IP:11015-2-AP, 4µg; Detection:11015-2-AP 1:300) with mouse testis tissue lysate 4000µg.

Applications

Tested applications:	ELISA, WB, IHC, IP
Cited applications:	IF, WB
Species specificity:	Human, Mouse, Rat; other species not tested.
Cited species:	Human
Calculated DOM3Z MW:	43.6 kDa
Observed DOM3Z MW:	45 kDa
Positive WB detected in	Mouse testis tissue, SH-SY5Y cells
Positive IP detected in	Mouse testis tissue
Positive IHC detected in	Human breast cancer tissue
Recommended dilution:	WB: 1:200-1:1000 IP: 1:200-1:1000 IHC: 1:20-1:200

Application key: WB = Western blotting, IHC = Immunohistochemistry, IF = Immunofluorescence, IP = Immunoprecipitation

Immunogen information

Immunogen:	Ag1491
GenBank accession number:	BC009344
Gene ID (NCBI):	1797
Full name:	Dom-3 homolog Z (C. elegans)

Product information

Purification method:	Antigen affinity purification
Storage:	PBS with 0.02% sodium azide and 50% glycerol pH 7.3. Store at -20°C.