

CIDEC Polyclonal Antibody

Catalog number: 12287-1-AP

Size: 47 µg/150 µl

Source: Rabbit

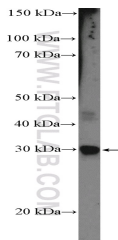
Isotype: IgG

Synonyms:

CIDEC; Cell death activator

CIDE 3, CIDE 3, CIDEC,

FLJ20871, Fsp27



MCF-7 cells were subjected to SDS PAGE followed by western blot with 12287-1-AP (CIDEC Antibody) at dilution of 1:1000

Background

Cell death-inducing DFF45-like effector (CIDE) proteins, including Cidea, Cideb and Cidec (also called Fsp27 in rodents), are predominantly expressed in brown adipose tissues (BAT), liver and WAT. Recent studies found that overexpression of Fsp27 induces the accumulation of lipid droplets (LDs) and enhances LD size; knockdown of Fsp27 decreases LD size and increases LD number in 3T3-L1 adipocytes. Cidec is localized on the surface of lipid droplets and could promote the differentiation of human adipocytes. Catalog#12287-1-AP recognizing CIDEC (calculated 28 kDa) as a 30 kDa and 45-50 kDa due to its posttranslational modification (PMID: 19258494).

Applications

Tested applications:	ELISA, WB
Species specificity:	Human, Mouse, Rat; other species not tested.
Calculated CIDEC MW:	238aa, 27 kDa
Observed CIDEC MW:	29 kDa; 48 kDa
Positive WB detected in	MCF-7 cells, HeLa cells, L02 cells
Recommended dilution:	WB: 1:500-1:5000

Application key: WB = Western blotting, IHC = Immunohistochemistry, IF = Immunofluorescence, IP = Immunoprecipitation

Immunogen information

Immunogen:	Ag2913
GenBank accession number:	BC016851
Gene ID (NCBI):	63924
Full name:	Cell death-inducing DFFA-like effector c

Product information

Purification method:	Antigen affinity purification
Storage:	PBS with 0.1% sodium azide and 50% glycerol pH 7.3. Store at -20°C.