

Talin-1 Polyclonal Antibody

Catalog number: 14168-1-AP

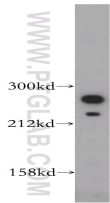
Size: 24 µg/150 µl

Source: Rabbit

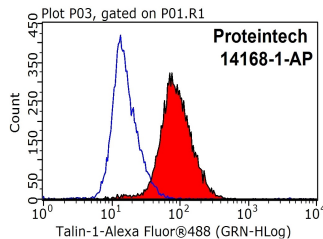
Isotype: IgG

Synonyms:

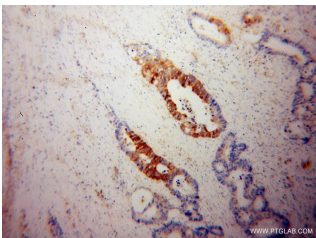
TLN1; ILWEQ, KIAA1027, talin
1, TLN, TLN1



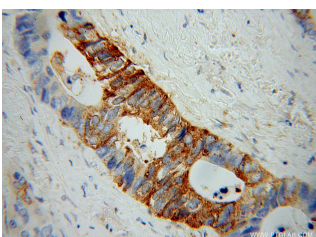
HeLa cells were subjected to SDS PAGE followed by western blot with 14168-1-AP(TLN1 antibody) at dilution of 1:500



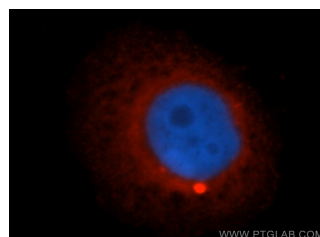
1X10⁶ HepG2 cells were stained with 0.2µg TLN1 antibody (14168-1-AP, red) and control antibody (blue). Fixed with 90% MeOH blocked with 3% BSA (30 min). Alexa Fluor 488-conjugated AffiniPure Goat Anti-Rabbit IgG(H+L) with dilution 1:1000.



Immunohistochemical of paraffin-embedded human colon cancer using 14168-1-AP(TLN1 antibody) at dilution of 1:100 (under 10x lens)



Immunohistochemical of



Immunofluorescent analysis

Applications

Tested applications:	ELISA, WB, IHC, IF, FC
Species specificity:	Human, Mouse, Rat; other species not tested.
Calculated Talin-1 MW:	2541aa, 270 kDa
Observed Talin-1 MW:	270kd, 230kd
Positive WB detected in:	HeLa cells, HepG2 cells, NIH/3T3 cells
Positive IHC detected in:	Human colon cancer tissue, human liver cancer tissue
Positive IF detected in:	HepG2 cells
Positive FC detected in:	HepG2 cells
Recommended dilution:	WB: 1:500-1:5000 IHC: 1:20-1:200 IF: 1:20-1:200 FC: N/A

Application key: WB = Western blotting, IHC = Immunohistochemistry, IF = Immunofluorescence, IP = Immunoprecipitation

Immunogen information

Immunogen:	Ag5367
GenBank accession number:	BC042923
Gene ID (NCBI):	7094
Full name:	Talin 1

Product information

Purification method:	Antigen affinity purification
Storage:	PBS with 0.02% sodium azide and 50% glycerol pH 7.3. Store at -20°C.

paraffin-embedded human colon cancer using 14168-1-AP(TLN1 antibody) at dilution of 1:100 (under 40x lens)

of HepG2 cells, using TLN1 antibody 14168-1-AP at 1:50 dilution and Rhodamine-labeled goat anti-rabbit IgG (red). Blue pseudocolor = DAPI (fluorescent DNA dye).