

## BBS10 Polyclonal Antibody

Catalog number: 12421-2-AP

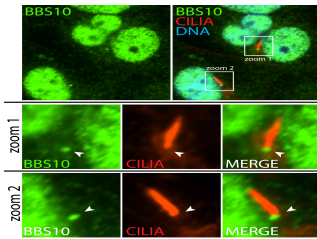
Size: 43 µg/150 µl

Source: Rabbit

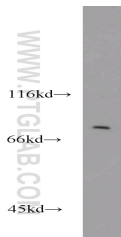
Isotype: IgG

Synonyms:

BBS10; Bardet Biedl syndrome 10, BBS10, C12orf58, FLJ23560



IF result (nuclear and the base of cilia stain) of anti-BBS10 (12421-2-AP; 1:50) with hTERT-RPE1 cell (PFA fixed) by Dr. Moshe Kim.



HepG2 cells were subjected to SDS PAGE followed by western blot with 12421-2-AP(BBS10 antibody) at dilution of 1:800

### Background

BBS10, also named as C12orf58, belongs to the TCP-1 chaperonin family. It is probable molecular chaperone. Assists the folding of proteins upon ATP hydrolysis. As part of the BBS/CCT complex, BBS10 may play a role in the assembly of BBSome, a complex involved in ciliogenesis regulating transports vesicles to the cilia. Involved in adipogenic differentiation. (PMID:20080638,19190184) Defects in BBS10 are the cause of Bardet-Biedl syndrome type 10 (BBS10).

### Applications

Tested applications:	ELISA, WB, IF
Cited applications:	IF, WB
Species specificity:	Human, Zebrafish; other species not tested.
Cited species:	Human, mouse
Calculated BBS10 MW:	81kd
Observed BBS10 MW:	81kd
Positive WB detected in	HepG2 cells, A549 cells, MCF7 cells
Positive IF detected in	HTERT-RPE1 cells
Recommended dilution:	WB: 1:400 - 1:1600 IF: 1:25-1:100

Application key: WB = Western blotting, IHC = Immunohistochemistry, IF = Immunofluorescence, IP = Immunoprecipitation

### Immunogen information

Immunogen:	Ag3073
GenBank accession number:	BC013795
Gene ID (NCBI):	79738
Full name:	Bardet-Biedl syndrome 10

### Product information

Purification method:	Antigen affinity purification
Storage:	PBS with 0.02% sodium azide and 50% glycerol pH 7.3. Store at -20°C.