

## Hemoglobin epsilon Polyclonal Antibody

Catalog number: 12361-1-AP

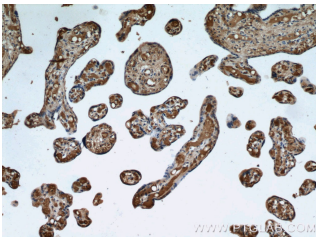
Size: 58 µg/150 µl

Source: Rabbit

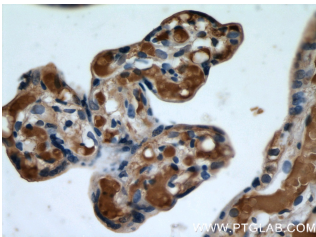
Isotype: IgG

Synonyms:

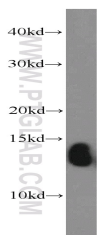
HBE1; Epsilon globin, HBE, HBE1, Hemoglobin epsilon chain, Hemoglobin subunit epsilon, hemoglobin, epsilon 1



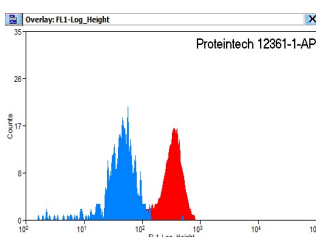
Immunohistochemical of paraffin-embedded human placenta using 12361-1-AP (HBE1 antibody) at dilution of 1:50 (under 10x lens)



Immunohistochemical of paraffin-embedded human placenta using 12361-1-AP (HBE1 antibody) at dilution of 1:50 (under 40x lens)



human placenta tissue were subjected to SDS PAGE followed by western blot with 12361-1-AP (HBE1 antibody) at dilution of 1:1000



1X10<sup>6</sup> K-562 cells were

### Background

The hemoglobin molecule is a tetramer consisting of two alpha- and two beta-globin-like chains. HBE1 (hemoglobin epsilon chain) is a beta-type chain of hemoglobin predominantly expressed during the embryonic stage (21321359). The HBE1 has been regarded as the best marker for fetal nucleated red blood cells (NRBCs). This antibody can be used to label and isolate fetal cells from maternal blood and may be useful in prenatal diagnosis (15906407).

### Applications

Tested applications:	ELISA, WB, IHC, FC
Cited applications:	WB
Species specificity:	Human, Mouse, Rat; other species not tested.
Cited species:	Human, rat
Calculated Hemoglobin epsilon MW:	147aa, 16 kDa
Observed Hemoglobin epsilon MW:	12-16 kDa
Positive WB detected in	Human placenta tissue, K-562 cells, mouse placenta tissue
Positive IHC detected in	Human placenta tissue
Positive FC detected in	K-562 cells
Recommended dilution:	WB: 1:500-1:5000 IHC: 1:20-1:200 FC: N/A

Application key: WB = Western blotting, IHC = Immunohistochemistry, IF = Immunofluorescence, IP = Immunoprecipitation

### Immunogen information

Immunogen:	Ag3026
GenBank accession number:	BC015537
Gene ID (NCBI):	3046
Full name:	Hemoglobin, epsilon 1

### Product information

Purification method:	Antigen affinity purification
Storage:	PBS with 0.1% sodium azide and 50% glycerol pH 7.3. Store at -20°C.

stained with 0.2ug HBE1  
antibody (12361-1-AP, red)  
and control antibody (blue).  
Fixed with 90% MeOH  
blocked with 3% BSA (30  
min). Alexa Fluor 488-  
conjugated AffiniPure Goat  
Anti-Rabbit IgG(H+L) with  
dilution 1:1500.