

## SFTPC Polyclonal Antibody

Catalog number: 10774-1-AP

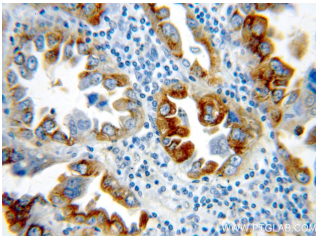
Size: 48 µg/150 µl

Source: Rabbit

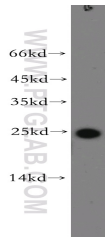
Isotype: IgG

Synonyms:

SFTPC; PSP C, SFTP2, SFTPC, SMDP2, SP C, SP5, surfactant protein C



Immunohistochemical of paraffin-embedded human lung cancer using 10774-1-AP(SFTPC antibody) at dilution of 1:50 (under 40x lens)



A549 cells were subjected to SDS PAGE followed by western blot with 10774-1-AP(SFTPC antibody) at dilution of 1:300

### Background

SFTPC (surfactant protein C), also named as SFTP2, SP5 and SP-C, is a pulmonary surfactant associated proteins promote alveolar stability by lowering the surface tension at the air-liquid interface in the peripheral air spaces. Defects in SFTPC are the cause of pulmonary surfactant metabolism dysfunction type 2 (SMDP2). Genetic variations in SFTPC are associated with respiratory distress syndrome in premature infants (RDS). Two isoforms of the human protein are produced by alternative splicing, this antibody (catalog#10774-1-AP) is a rabbit polyclonal antibody raised with the full-length SFTPC of huam origin.

### Applications

Tested applications:	ELISA, WB, IHC
Cited applications:	IHC
Species specificity:	Human, Rat; other species not tested.
Cited species:	Rat
Calculated SFTPC MW:	21 kDa
Observed SFTPC MW:	21-25 kDa
Positive WB detected in	A549 cells
Positive IHC detected in	Human lung cancer tissue, human testis tissue
Recommended dilution:	WB: 1:200-1:1000 IHC: 1:20-1:200

Application key: WB = Western blotting, IHC= Immunohistochemistry, IF = Immunofluorescence, IP = Immunoprecipitation

### Immunogen information

Immunogen:	Ag1159
GenBank accession number:	BC005913
Gene ID (NCBI):	6440
Full name:	Surfactant protein C

### Product information

Purification method:	Antigen affinity purification
Storage:	PBS with 0.1% sodium azide and 50% glycerol pH 7.3. Store at -20°C.