

GSTA1 Polyclonal Antibody

Catalog number: 14475-1-AP

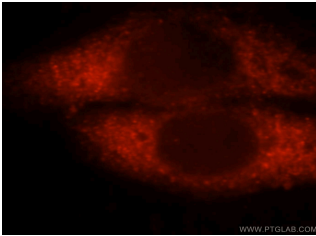
Size: 20 µg/150 µl

Source: Rabbit

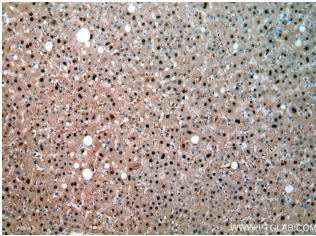
Isotype: IgG

Synonyms:

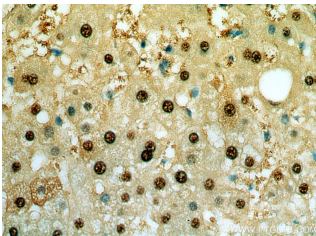
GSTA1; Glutathione S transferase A1, GST class alpha member 1, GST epsilon, GST HA subunit 1, GST2, GSTA1, GSTA1 1, GTH1



Immunofluorescent analysis of HepG2 cells, using GSTA1 antibody 14475-1-AP at 1:25 dilution and Rhodamine-labeled goat anti-rabbit IgG (red).



Immunohistochemical of paraffin-embedded human liver using 14475-1-AP (GSTA1 antibody) at dilution of 1:50 (under 10x lens)



Immunohistochemical of paraffin-embedded human liver using 14475-1-AP (GSTA1 antibody) at dilution of 1:50 (under 40x lens)

Applications

Tested applications:	ELISA, WB, IHC, IF, IP
Cited applications:	WB
Species specificity:	Human, Mouse, Rat; other species not tested.
Cited species:	Mouse
Calculated GSTA1 MW:	26 kDa
Observed GSTA1 MW:	26kd
Positive WB detected in	Mouse liver tissue, human kidney tissue
Positive IP detected in	Mouse liver tissue
Positive IHC detected in	Human liver tissue, human kidney tissue, human liver cancer tissue
Positive IF detected in	HepG2 cells
Recommended dilution:	WB: 1:500-1:5000 IP: 1:200-1:2000 IHC: 1:20-1:200 IF: 1:10-1:100

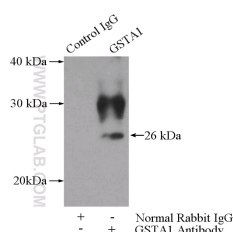
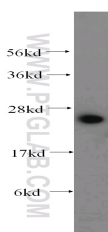
Application key: WB = Western blotting, IHC = Immunohistochemistry, IF = Immunofluorescence, IP = Immunoprecipitation

Immunogen information

Immunogen:	Ag5849
GenBank accession number:	BC053578
Gene ID (NCBI):	2938
Full name:	Glutathione S-transferase alpha 1

Product information

Purification method:	Antigen affinity purification
Storage:	PBS with 0.02% sodium azide and 50% glycerol pH 7.3. Store at -20°C.



mouse liver tissue were	IP Result of anti-GSTA1
subjected to SDS PAGE	(IP:14475-1-AP, 3ug;
followed by western blot with	Detection:14475-1-AP 1:500)
14475-1-AP(GSTA1 antibody)	with mouse liver tissue lysate
at dilution of 1:400	4000ug.