

## PGM2L1 Polyclonal Antibody

Catalog number: 13942-1-AP

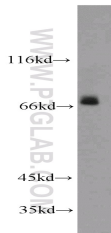
Size: 29 µg/150 µl

Source: Rabbit

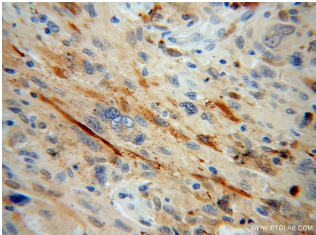
Isotype: IgG

Synonyms:

PGM2L1; BM32A; FLJ32029



mouse skeletal muscle tissue were subjected to SDS PAGE followed by western blot with 13942-1-AP (PGM2L1 Antibody) at dilution of 1:600



Immunohistochemistry of paraffin-embedded human gliomas using 13942-1-AP (PGM2L1 Antibody) at Dilution 1:50 (under 40x lens)

### Applications

Tested applications:	ELISA, WB, IHC
Species specificity:	Human, mouse, rat; other species not tested.
Positive WB detected in:	Mouse skeletal muscle tissue
Calculated PGM2L1 MW:	70kd
Observed PGM2L1 MW:	72kd
Positive IHC detected in:	Human gliomas
Recommended dilution:	WB: 1:200-1:2000 IHC: 1:20-1:200

Application key: WB = Western blotting, IHC = Immunohistochemistry, IF = Immunofluorescence, IP = Immunoprecipitation, FC = Flow cytometry

### Immunogen information

Immunogen:	Ag5019
GenBank accession number:	BC059360
Gene ID (NCBI):	283209
Full name:	Phosphoglucomutase 2-like 1

### Product information

Purification method:	Antigen affinity purification
Storage:	PBS with 0.02% sodium azide and 50% glycerol pH 7.3. Store at -20°C.