

Cathepsin F Polyclonal Antibody

Catalog number: 11055-1-AP

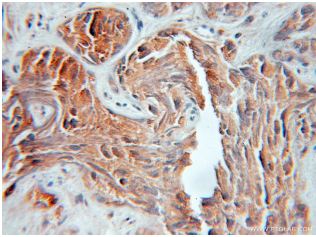
Size: 37 µg/150 µl

Source: Rabbit

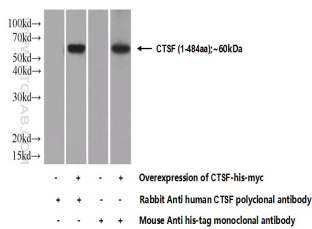
Isotype: IgG

Synonyms:

CTSF; Cathepsin F, CATSF, CTSF



Immunohistochemical of paraffin-embedded human prostate cancer using 11055-1-AP (CTSF antibody) at dilution of 1:100 (under 10x lens)



Transfected HEK-293 cells were subjected to SDS PAGE followed by western blot with 11055-1-AP (CTSF Antibody) at dilution of 1:1000

Background

CTSF (Cathepsin F) is a member of the papain family of cysteine proteases. These enzymes represent a major component of the lysosomal proteolytic system. They are synthesized as inactive precursors consisting of a signal sequence, a propeptide, and a catalytically active mature region. Cathepsins are routed to the endosomal/lysosomal compartment via the mannose 6-phosphate receptor pathway. The deduced 484-amino acid cathepsin F protein has a signal sequence and potential glycosylation sites.

Applications

Tested applications:	ELISA, IHC, WB
Cited applications:	IHC
Species specificity:	Human, Mouse, Rat; other species not tested.
Cited species:	Human
Calculated Cathepsin F MW:	53 kDa and 34 kDa
Observed Cathepsin F MW:	
Positive WB detected in	Transfected HEK-293 cells
Positive IHC detected in	Human prostate cancer tissue, human heart tissue, human stomach cancer tissue, mouse heart tissue, mouse liver tissue
Recommended dilution:	WB: 1:500-1:5000 IHC: 1:20-1:200

Application key: WB = Western blotting, IHC = Immunohistochemistry, IF = Immunofluorescence, IP = Immunoprecipitation

Immunogen information

Immunogen:	Ag1521
GenBank accession number:	BC011682
Gene ID (NCBI):	8722
Full name:	Cathepsin F

Product information

Purification method:	Antigen affinity purification
Storage:	PBS with 0.1% sodium azide and 50% glycerol pH 7.3. Store at -20°C.