

CHI3L1 Polyclonal Antibody

Catalog number: 12036-1-AP

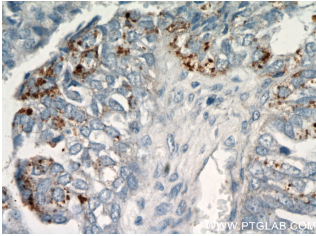
Size: 25 µg/150 µl

Source: Rabbit

Isotype: IgG

Synonyms:

CHI3L1; 39 kDa synovial protein, ASRT7, Cartilage glycoprotein 39, CGP 39, CHI3L1, Chitinase 3 like protein 1, DKFZp686N19119, FLJ38139, GP 39, GP39, HC gp39, hCGP 39, HCGP 3P, YKL 40, YKL40, YYL 40



Immunohistochemical of paraffin-embedded human ovary tumor using 12036-1-AP (CHI3L1 antibody) at dilution of 1:50 (under 40x lens)

Applications

Tested applications:	ELISA, IHC
Species specificity:	Human, Mouse, Rat; other species not tested.
Calculated CHI3L1 MW:	383aa, 43 kDa
Observed CHI3L1 MW:	
Positive IHC detected in	Human ovary tumor tissue, human liver tissue
Recommended dilution:	IHC: 1:20-1:200

Application key: WB = Western blotting, IHC = Immunohistochemistry, IF = Immunofluorescence, IP = Immunoprecipitation

Immunogen information

Immunogen:	Ag2710
GenBank accession number:	BC008568
Gene ID (NCBI):	1116
Full name:	Chitinase 3-like 1 (cartilage glycoprotein-39)

Product information

Purification method:	Antigen affinity purification
Storage:	PBS with 0.1% sodium azide and 50% glycerol pH 7.3. Store at -20°C.