

COPS2/TRIP15 Polyclonal Antibody

Catalog number: 10969-2-AP

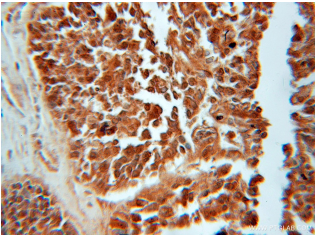
Size: 74 µg/150 µl

Source: Rabbit

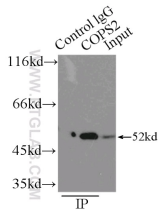
Isotype: IgG

Synonyms:

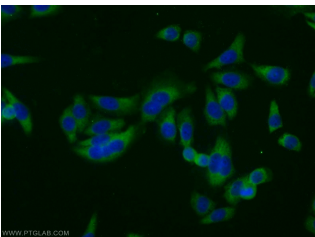
COPS2; ALIEN, Alien homolog,
COPS 2, COPS2, CSN2, SGN2,
Signalosome subunit 2, TR
interacting protein 15, TRIP 15,
TRIP15



Immunohistochemical of paraffin-embedded human ovary tumor using 10969-2-AP (COPS2 antibody) at dilution of 1:50 (under 10x lens)



IP Result of anti-COPS2 (IP:10969-2-AP, 3µg; Detection:10969-2-AP 1:500) with NIH/3T3 cells lysate 2500µg.



Immunofluorescent analysis of HeLa cells using 10969-2-AP (COPS2 Antibody) at dilution of 1:25 and Alexa Fluor 488-conjugated AffiniPure Goat Anti-Rabbit IgG(H+L)

Background

COPS2 is an essential component of the COP9 signalosome complex (CSN), a complex involved in various cellular and developmental processes. The CSN complex is an essential regulator of the ubiquitin (Ubl) conjugation pathway by mediating the deneddylation of the cullin subunits of SCF-type E3 ligase complexes, leading to decrease the Ubl ligase activity of SCF-type complexes such as SCF, CSA or DDB2. The complex is also involved in phosphorylation of p53/TP53, c-jun/JUN, IκappaBα/NFKBIA, ITPK1 and IRF8/ICSBP, possibly via its association with CK2 and PKD kinases. CSN-dependent phosphorylation of TP53 and JUN promotes and protects degradation by the Ubl system, respectively. (refer to UniProt)
Catalog#10969-2-AP is a rabbit polyclonal antibody raised against the full-length of human COPS2. The MW of this protein is 52 kDa, and this antibody specially recognises the 52 kDa protein.

Applications

Tested applications:	ELISA, IHC, IF, IP, WB
Cited applications:	WB
Species specificity:	Human, Mouse; other species not tested.
Cited species:	Human
Calculated COPS2/TRIP15 MW:	52 kDa
Observed COPS2/TRIP15 MW:	52 kDa
Positive WB detected in	HeLa cells, human brain tissue, mouse brain tissue, mouse skeletal muscle tissue, NIH/3T3 cells
Positive IP detected in	NIH/3T3 cells
Positive IHC detected in	Human ovary tumor tissue
Positive IF detected in	HeLa cells
Recommended dilution:	WB: 1:200-1:2000 IP: 1:200-1:2000 IHC: 1:20-1:200 IF: 1:10-1:100

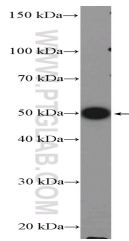
Application key: WB = Western blotting, IHC = Immunohistochemistry, IF = Immunofluorescence, IP = Immunoprecipitation

Immunogen information

Immunogen:	Ag1415
GenBank accession number:	BC012629
Gene ID (NCBI):	9318
Full name:	COP9 constitutive photomorphogenic homolog subunit 2 (Arabidopsis)

Product information

Purification method:	Antigen affinity purification
Storage:	PBS with 0.1% sodium azide and 50% glycerol pH 7.3. Store at -20°C.



HeLa cells were subjected to SDS PAGE followed by western blot with 10969-2-AP(COPS2 Antibody) at dilution of 1:600