

BRF2 Polyclonal Antibody

Catalog number: 12056-1-AP

Size: 44 µg/150 µl

Source: Rabbit

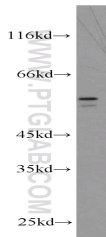
Isotype: IgG

Synonyms:

BRF2; B related factor 2, BRF 2,

BRF2, BRFU, FLJ11052, hBRFU,

hTFIIIB50, TFIIIB50



HT-1080 cells were subjected to SDS PAGE followed by western blot with 12056-1-AP (BRF2 antibody) at dilution of 1:300

Background

Human cells contain two types of RNA polymerase III transcription factor (TFIIIB), BRF1 and BRF2. BRF2, also named as BRFU, contains one TFIIIB-type zinc finger. It is a general activator of RNA polymerase III transcription. It is a factor exclusively required for RNA polymerase III transcription of genes with promoter elements upstream of the initiation sites. BRF2 is recruited to type 3 promoters such as the human U6 snRNA promoter. It differs from BRF1-TFIIIB in that it contains the TFIIIB-related factor BRF2 instead of BRF1 and its three components do not form a stable complex. This antibody is a rabbit polyclonal antibody raised against residues near the C terminus of human BRF2. It recognizes a 50-60kd band in WB analysis.

Applications

Tested applications:	ELISA, WB
Species specificity:	Human, Mouse, Rat; other species not tested.
Calculated BRF2 MW:	47 kDa
Observed BRF2 MW:	50-60 kDa
Positive WB detected in	HT-1080 cells, DU 145 cells
Recommended dilution:	WB: 1:200-1:2000

Application key: WB = Western blotting, IHC = Immunohistochemistry, IF = Immunofluorescence, IP = Immunoprecipitation

Immunogen information

Immunogen:	Ag2686
GenBank accession number:	BC010648
Gene ID (NCBI):	55290
Full name:	BRF2, subunit of RNA polymerase III transcription initiation factor, BRF1-like

Product information

Purification method:	Antigen affinity purification
Storage:	PBS with 0.1% sodium azide and 50% glycerol pH 7.3. Store at -20°C.