

CUL7 Polyclonal Antibody

Catalog number: 13738-1-AP

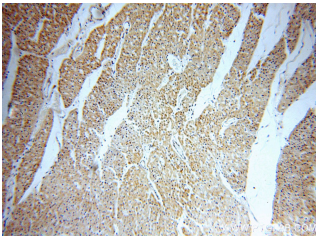
Size: 23 µg/150 µl

Source: Rabbit

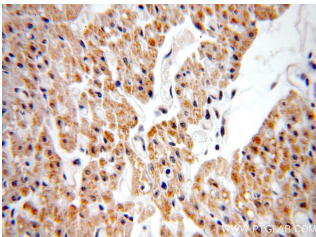
Isotype: IgG

Synonyms:

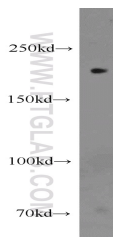
CUL7; CUL 7, CUL7, cullin 7,
dJ20C7.5, KIAA0076



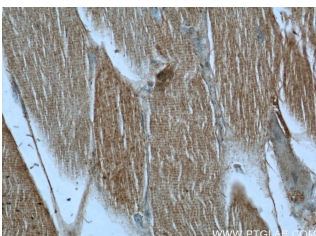
Immunohistochemical of paraffin-embedded human heart using 13738-1-AP (CUL7 antibody) at dilution of 1:50 (under 10x lens)



Immunohistochemical of paraffin-embedded human heart using 13738-1-AP (CUL7 antibody) at dilution of 1:50 (under 40x lens)



HEK-293 cells were subjected to SDS PAGE followed by western blot with 13738-1-AP (CUL7 antibody) at dilution of 1:300



Background

The cullin family proteins are scaffold proteins for the Ring finger type E3 ligases, participating in the proteolysis through the ubiquitin-proteasome pathway. Humans express seven cullin proteins: CUL1–3, CUL4A, CUL4B, CUL5, and CUL7. Each cullin protein can form an E3 ligase similar to the prototype Ring-type E3 ligase Skp1-CUL1-F-box complex. The Cullin-RING-finger type E3 ligases are important regulators in early embryonic development, as highlighted by genetic studies demonstrating that knock-out of CUL1, CUL3, or CUL4A in mice results in early embryonic lethality. CUL7 was originally discovered as 185-kDa protein associated with the large T antigen of simian virus 40 (SV40). CUL7-deficient mice exhibit neonatal lethality with reduced size and vascular defects. CUL7 presumably plays a role in the DNA damage response by limiting p53 activity. CUL7 mutations have also been identified in 3-M syndrome and the Yakuts short stature syndrome, both of which are characterized by pre- and post-natal growth retardation but with relatively normal mental and endocrine functions, suggesting that CUL7 may also be crucial for human placental development.

Applications

Tested applications:	ELISA, WB, IHC
Cited applications:	WB
Species specificity:	Human, Mouse; other species not tested.
Cited species:	Mouse
Calculated CUL7 MW:	1698aa, 191 kDa
Observed CUL7 MW:	185kd
Positive WB detected in:	HEK-293 cells, A431 cells
Positive IHC detected in:	Human heart tissue, human skeletal muscle tissue
Recommended dilution:	WB: 1:200-1:2000 IHC: 1:20-1:200

Application key: WB = Western blotting, IHC = Immunohistochemistry, IF = Immunofluorescence, IP = Immunoprecipitation

Immunogen information

Immunogen:	Ag4675
GenBank accession number:	BC033647
Gene ID (NCBI):	9820
Full name:	Cullin 7

Product information

Purification method:	Antigen affinity purification
Storage:	PBS with 0.02% sodium azide and 50% glycerol pH 7.3. Store at -20°C.

**Immunohistochemistry of
paraffin-embedded human
skeletal muscle tissue slide
using 13738-1-AP (CUL7
Antibody) at dilution of 1:50
(under 40x lens)**