

EID1 Polyclonal Antibody

Catalog number: 11734-1-AP

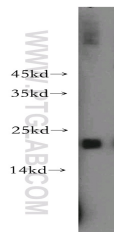
Size: 20 µg/150 µl

Source: Rabbit

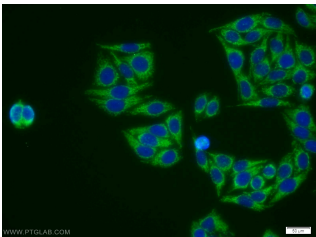
Isotype: IgG

Synonyms:

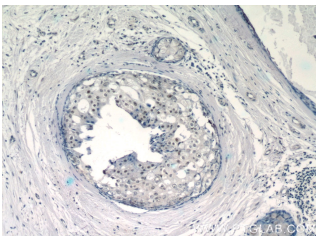
EID1; 21 kDa pRb associated protein, C15orf3, CRI1, EID 1, EID1, IRO45620, PNAS 22, PTD014, RBP21



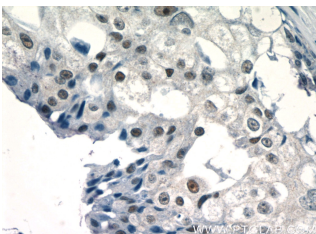
HepG2 cells were subjected to SDS PAGE followed by western blot with 11734-1-AP(EID1 antibody) at dilution of 1:300



Immunofluorescent analysis of HepG2 cells using 11734-1-AP(EID1 Antibody) at dilution of 1:25 and Alexa Fluor 488-conjugated AffiniPure Goat Anti-Rabbit IgG(H+L)



Immunohistochemistry of paraffin-embedded human breast cancer tissue slide using 11734-1-AP(EID1 Antibody) at dilution of 1:50 (under 10x lens)



Applications

Tested applications:	ELISA, WB, IHC, IF
Cited applications:	WB
Species specificity:	Human, Mouse; other species not tested.
Cited species:	Human
Calculated EID1 MW:	187aa,21 kDa
Observed EID1 MW:	20-22kd
Positive WB detected in	HepG2 cells, A431 cells, HT-1080 cells, human skeletal muscle tissue, K-562 cells, U-937 cells
Positive IHC detected in	Human breast cancer tissue
Positive IF detected in	HepG2 cells
Recommended dilution:	WB: 1:500-1:5000 IHC: 1:20-1:200 IF: 1:10-1:100

Application key: WB = Western blotting, IHC = Immunohistochemistry, IF = Immunofluorescence, IP = Immunoprecipitation

Immunogen information

Immunogen:	Ag2336
GenBank accession number:	BC024151
Gene ID (NCBI):	23741
Full name:	EP300 interacting inhibitor of differentiation 1

Product information

Purification method:	Antigen affinity purification
Storage:	PBS with 0.02% sodium azide and 50% glycerol pH 7.3. Store at -20°C.

**Immunohistochemistry of
paraffin-embedded human
breast cancer tissue slide
using 11734-1-AP (EID1
Antibody) at dilution of 1:50
(under 40x lens)**