

## ARTS1 Polyclonal Antibody

Catalog number: 13821-1-AP

Size: 68 µg/150 µl

Source: Rabbit

Isotype: IgG

Synonyms:

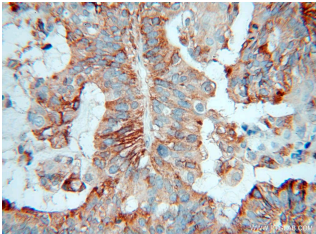
ERAP1; A LAP, ALAP,

Aminopeptidase PILS, APPILS,

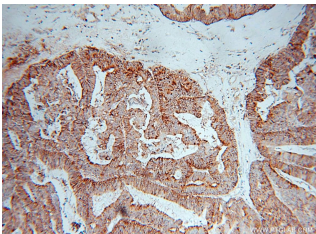
ARTS 1, ARTS1, ERAAP,

ERAAP1, ERAP1, KIAA0525,

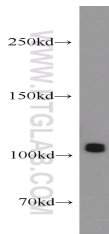
PILS AP, PILSAP



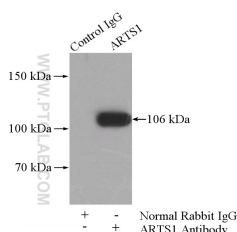
Immunohistochemical of paraffin-embedded human ovary tumor using 13821-1-AP (ERAP1 antibody) at dilution of 1:100 (under 40x lens)



Immunohistochemical of paraffin-embedded human ovary tumor using 13821-1-AP (ERAP1 antibody) at dilution of 1:100 (under 10x lens)



Jurkat cells were subjected to SDS PAGE followed by western blot with 13821-1-AP (ERAP1 antibody) at dilution of 1:1000



### Background

ARTS1 is a 100 kDa, monomeric, soluble zinc aminopeptidase that belongs to the M1 family of metallo-peptidases. ERAP1 is induced by interferon-gama and can degrade peptides 9-15 residues long (PMID:18987748). It can be glycosylated to 120kDa and form homodimers and heterodimers (PMID:15908954).

### Applications

Tested applications:	ELISA, WB, IHC, IP
Cited applications:	WB
Species specificity:	Human, Mouse, Rat; other species not tested.
Cited species:	Human
Calculated ARTS1 MW:	107 kDa
Observed ARTS1 MW:	106 kDa
Positive WB detected in	Jurkat cells
Positive IP detected in	Jurkat cells
Positive IHC detected in	Human ovary tumor tissue
Recommended dilution:	WB: 1:500-1:5000
	IP: 1:200-1:2000
	IHC: 1:20-1:200

Application key: WB = Western blotting, IHC = Immunohistochemistry, IF = Immunofluorescence, IP = Immunoprecipitation

### Immunogen information

Immunogen:	Ag4918
GenBank accession number:	BC030775
Gene ID (NCBI):	51752
Full name:	Endoplasmic reticulum aminopeptidase 1

### Product information

Purification method:	Antigen affinity purification
Storage:	PBS with 0.02% sodium azide and 50% glycerol pH 7.3. Store at -20°C.

**IP Result of anti-ERAP1**  
**(IP:13821-1-AP, 4ug;**  
**Detection:13821-1-AP 1:600)**  
**with Jurkat cells lysate**  
**3600ug.**