

CSNK2A1 Polyclonal Antibody

Catalog number: 10992-1-AP

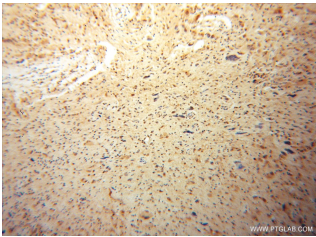
Size: 93 µg/150 µl

Source: Rabbit

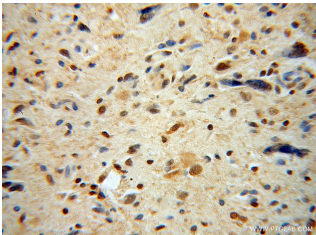
Isotype: IgG

Synonyms:

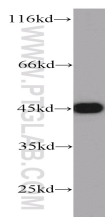
CSNK2A1; Casein kinase II subunit alpha, CK II alpha, CK2A1, CKII, CSNK2A1



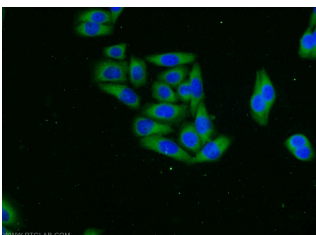
Immunohistochemical of paraffin-embedded human gliomas using 10992-1-AP (CSNK2A1 antibody) at dilution of 1:100 (under 10x lens)



Immunohistochemical of paraffin-embedded human gliomas using 10992-1-AP (CSNK2A1 antibody) at dilution of 1:100 (under 40x lens)



HeLa cells were subjected to SDS PAGE followed by western blot with 10992-1-AP (CSNK2A1 antibody) at dilution of 1:1000



Immunofluorescent analysis of HeLa cells using 10992-1-

Background

CSNK2A1 (Casein kinase II subunit alpha) is also named as CK2A1 and belongs to the CK2 subfamily. The CSNK2A1 gene contains 8 exons whose sequences comprise bases 102 to 824 of the coding region of the human casein kinase II alpha subunit. Casein kinase II is a ubiquitous protein-serine/threonine kinase in eukaryotic cells that catalyzes the phosphorylation of many protein substrates and has been regarded as a second-messenger-independent protein kinase. This enzyme is composed of an α subunit (37 to 44 kDa) and a β subunit (24 to 28 kDa) and exists as an $\alpha 2\beta 2$ tetramer (PMID:1448100). Casein kinase 2 has been found to be increased at protein level and up-regulated at the level of enzyme activity in the majority of cancers. However, elevated levels of casein kinase 2 are present in certain normal organs such as brain and testes.

Applications

Tested applications:	ELISA, WB, IHC, IF, IP
Species specificity:	Human, Mouse, Rat; other species not tested.
Calculated CSNK2A1 MW:	45 kDa
Observed CSNK2A1 MW:	45 kDa
Positive WB detected in	HeLa cells, HEK-293 cells, Jurkat cells, NIH/3T3 cells
Positive IP detected in	HeLa cells
Positive IHC detected in	Human gliomas tissue, human colon cancer tissue
Positive IF detected in	HeLa cells
Recommended dilution:	WB: 1:500-1:5000 IP: 1:500-1:5000 IHC: 1:20-1:200 IF: 1:10-1:100

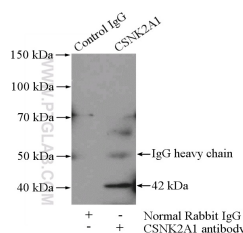
Application key: WB = Western blotting, IHC = Immunohistochemistry, IF = Immunofluorescence, IP = Immunoprecipitation

Immunogen information

Immunogen:	Ag1452
GenBank accession number:	BC011668
Gene ID (NCBI):	1457
Full name:	Casein kinase 2, alpha 1 polypeptide

Product information

Purification method:	Antigen affinity purification
Storage:	PBS with 0.1% sodium azide and 50% glycerol pH 7.3. Store at -20°C.



IP Result of anti-CSNK2A1 (IP:10992-1-AP, 4µg;

AP (CSNK2A1 Antibody) at Detection:10992-1-AP 1:1000)
dilution of 1:25 and Alexa with HeLa cells lysate 2800ug.
Fluor 488-conjugated
AffiniPure Goat Anti-Rabbit
IgG(H+L)