

ZBP1 Polyclonal Antibody

Catalog number: 13285-1-AP

Size: 44 µg/150 µl

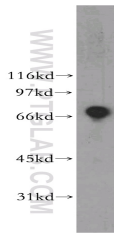
Source: Rabbit

Isotype: IgG

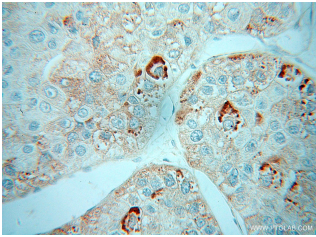
Synonyms:

ZBP1; C20orf183; DAI; DLM-1;

DLM1



Jurkat cells were subjected to SDS PAGE followed by western blot with 13285-1-AP(ZBP1 Antibody) at dilution of 1:1200



Immunohistochemistry of paraffin-embedded human liver cancer using 13285-1-AP(ZBP1 Antibody) at Dilution 1:50 (under 40x lens)

Applications

Tested applications:	ELISA, WB, IHC
Species specificity:	Human; other species not tested.
Positive WB detected in:	Jurkat cells, HL-60 cells
Calculated ZBP1 MW:	429aa,46kd
Observed ZBP1 MW:	68kd
Positive IHC detected in:	Human liver cancer
Recommended dilution:	WB: 1:500-1:5000 IHC: 1:20-1:200

Application key: WB = Western blotting, IHC = Immunohistochemistry, IF = Immunofluorescence, IP = Immunoprecipitation, FC = Flow cytometry

Immunogen information

Immunogen:	Ag4119
GenBank accession number:	BC028218
Gene ID (NCBI):	81030
Full name:	Z-DNA binding protein 1

Product information

Purification method:	Antigen affinity purification
Storage:	PBS with 0.02% sodium azide and 50% glycerol pH 7.3. Store at -20°C.