

## MEF2A Polyclonal Antibody

Catalog number: 12382-1-AP

Size: 37 µg/150 µl

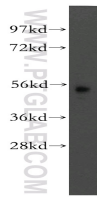
Source: Rabbit

Isotype: IgG

Synonyms:

MEF2A; ADCAD1; RSRFC4;

RSRFC9



mouse pancreas tissue were subjected to SDS PAGE followed by western blot with 12382-1-AP(MEF2A Antibody) at dilution of 1:1000

### Applications

Tested applications:	ELISA, WB
Species specificity:	Human, mouse, rat; other species not tested.
Positive WB detected in:	Mouse pancreas tissue
Calculated MEF2A MW:	499aa,54kd
Observed MEF2A MW:	54kd
Recommended dilution:	WB: 1:500-1:5000

Application key: WB = Western blotting, IHC = Immunohistochemistry, IF = Immunofluorescence, IP = Immunoprecipitation, FC = Flow cytometry

### Immunogen information

Immunogen:	Ag3049
GenBank accession number:	BC013437
Gene ID (NCBI):	4205
Full name:	Myocyte enhancer factor 2A

### Product information

Purification method:	Antigen affinity purification
Storage:	PBS with 0.1% sodium azide and 50% glycerol pH 7.3. Store at -20°C.