

UBC9 Polyclonal Antibody

Catalog number: 10070-1-AP

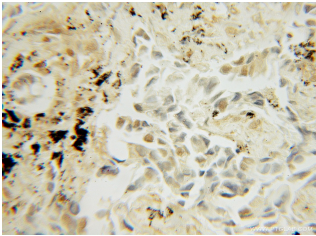
Size: 32 µg/150 µl

Source: Rabbit

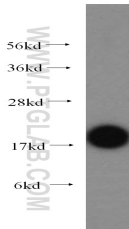
Isotype: IgG

Synonyms:

UBE2I; C358B7.1, E2, UBE2I, P18, SUMO conjugating enzyme UBC9, SUMO protein ligase, UBC9, UBCE9, UBE2I, Ubiquitin carrier protein 9, Ubiquitin carrier protein I, Ubiquitin protein ligase I



Immunohistochemical of paraffin-embedded human lung cancer using 10070-1-AP(UBC9 antibody) at dilution of 1:50 (under 10x lens)



mouse testis tissue were subjected to SDS PAGE followed by western blot with 10070-1-AP(UBC9 antibody) at dilution of 1:300

Background

UBE2I is also named as UBC9, UBCE9 and belongs to the ubiquitin-conjugating enzyme family. It is a homologue of the E2 ubiquitin conjugating enzyme and participates in the covalent linking of SUMO-1 molecule to the target protein. This protein is present at a high level in spleen and lung. Moderate level of UBE2I is detected in kidney and liver. Low amount of UBE2I is observed in brain, whereas the 18 kDa band of UBE2I is barely visible or absent in heart and skeletal muscle. In heart and muscle extracts the UBE2I antibodies recognizes a 38 kDa protein band, but this band is not visible in extracts of other rat tissues(PMID:14739995).

Applications

Tested applications:	ELISA, WB, IHC
Cited applications:	WB
Species specificity:	Human, Mouse, Rat; other species not tested.
Cited species:	Human
Calculated UBC9 MW:	18kd
Observed UBC9 MW:	18kd
Positive WB detected in	Mouse testis tissue, HEK-293 cells, mouse kidney tissue, mouse thymus tissue
Positive IHC detected in	Human lung cancer tissue
Recommended dilution:	WB: 1:200-1:2000 IHC: 1:20-1:200

Application key: WB = Western blotting, IHC = Immunohistochemistry, IF = Immunofluorescence, IP = Immunoprecipitation

Immunogen information

Immunogen:	Ag0111
GenBank accession number:	BC051289
Gene ID (NCBI):	7329
Full name:	Ubiquitin-conjugating enzyme E2I (UBC9 homolog, yeast)

Product information

Purification method:	Antigen affinity purification
Storage:	PBS with 0.1% sodium azide and 50% glycerol pH 7.3. Store at -20°C.