

FECH Polyclonal Antibody

Catalog number: 14466-1-AP

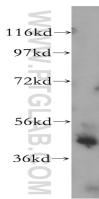
Size: 27 µg/150 µl

Source: Rabbit

Isotype: IgG

Synonyms:

FECH; EPP, FCE, FECH,
Ferrochelatase, mitochondrial,
Heme synthase, Protoheme
ferro lyase



human heart tissue were subjected to SDS PAGE followed by western blot with 14466-1-AP(FECH antibody) at dilution of 1:500

Background

FECH(ferrochelatase, mitochondrial) is also named as heme synthase, protoheme ferro-lyase and belongs to the ferrochelatase family. It is a homodimeric (86 kDa) mitochondrial membrane-associated enzyme that catalyzes the insertion of ferrous iron into protoporphyrin to form heme(PMID:11175906). It has 2 isoforms produced by alternative splicing and the full length protein has a transit peptide with 54 amino acids.

Applications

Tested applications:	ELISA, WB
Cited applications:	WB
Species specificity:	Human,Mouse,Rat; other species not tested.
Cited species:	Human, rat
Calculated FECH MW:	48kd
Observed FECH MW:	46kd
Positive WB detected in	Human heart tissue, HeLa cells, human liver tissue, K-562 cells
Recommended dilution:	WB: 1:500-1:5000

Application key: WB = Western blotting, IHC = Immunohistochemistry, IF = Immunofluorescence, IP = Immunoprecipitation

Immunogen information

Immunogen:	Ag5814
GenBank accession number:	BC039841
Gene ID (NCBI):	2235
Full name:	Ferrochelatase (protoporphyrin)

Product information

Purification method:	Antigen affinity purification
Storage:	PBS with 0.02% sodium azide and 50% glycerol pH 7.3. Store at -20°C.