

ALPL Polyclonal Antibody

Catalog number: 11187-1-AP

Size: 20 µg/150 µl

Source: Rabbit

Isotype: IgG

Synonyms:

ALPL; Alkaline phosphatase,

Alkaline phosphatase

liver/bone/kidney isozyme,

Alkaline phosphatase tissue

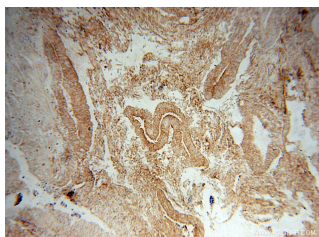
nonspecific isozyme, ALPL,

BLAP, Bone Alkaline

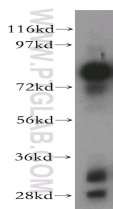
Phosphatase, NBAP



Immunohistochemical of paraffin-embedded human colon cancer using 11187-1-AP(ALPL antibody) at dilution of 1:100 (under 40x lens)



Immunohistochemical of paraffin-embedded human colon cancer using 11187-1-AP(ALPL antibody) at dilution of 1:100 (under 10x lens)



HEK-293 cells were subjected to SDS PAGE followed by western blot with 11187-1-AP(ALPL antibody) at dilution of 1:1000

Background

There are at least four distinct but related alkaline phosphatases: intestinal, placental, placental-like, and liver/bone/kidney (tissue non-specific). The product of this gene is a membrane bound glycosylated enzyme that is not expressed in any particular tissue and is, therefore, referred to as the tissue-nonspecific form of the enzyme. ALPL(Alkaline phosphatase, tissue-nonspecific isozyme) is also named as AP-TNAP, TNSALP and belongs to the alkaline phosphatase family. It can exist as a homodimer with the molecular weight of 140 kDa(PMID:18724009). ALPL was synthesized as a 66-kDa endo-b-N-acetylglucos-aminidase H (Endo H)-sensitive form, and processed to an 80-kDa mature form, which is anchored to the plasma membrane via glycosylphosphatidylinositol (GPI)(PMID:10839996). This antibody can bind the four mentioned alkaline phosphatases.

Applications

Tested applications:	ELISA, WB, IHC, FC
Cited applications:	IHC, WB
Species specificity:	Human, Mouse, Rat; other species not tested.
Cited species:	Mouse, pig, rat
Calculated ALPL MW:	57 kDa
Observed ALPL MW:	80 kDa
Positive WB detected in	HEK-293 cells, HeLa cells, mouse kidney tissue
Positive IHC detected in	Human colon cancer tissue, human liver cancer tissue, human lung cancer tissue
Positive FC detected in	HeLa cells
Recommended dilution:	WB: 1:500-1:5000 IHC: 1:20-1:200 FC: N/A

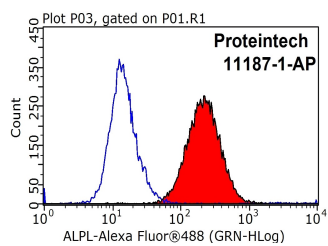
Application key: WB = Western blotting, IHC = Immunohistochemistry, IF = Immunofluorescence, IP = Immunoprecipitation

Immunogen information

Immunogen:	Ag1664
GenBank accession number:	BC021289
Gene ID (NCBI):	249
Full name:	Alkaline phosphatase, liver/bone/kidney

Product information

Purification method:	Antigen affinity purification
Storage:	PBS with 0.1% sodium azide and 50% glycerol pH 7.3. Store at -20°C.



1X10⁶ HeLa cells were stained with 0.2ug ALPL antibody (11187-1-AP, red) and control antibody (blue). Fixed with 90% MeOH blocked with 3% BSA (30 min). Alexa Fluor 488-conjugated AffiniPure Goat Anti-Rabbit IgG(H+L) with dilution 1:1000.