

PDE4D Polyclonal Antibody

Catalog number: 12918-1-AP

Size: 21 µg/150 µl

Source: Rabbit

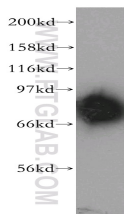
Isotype: IgG

Synonyms:

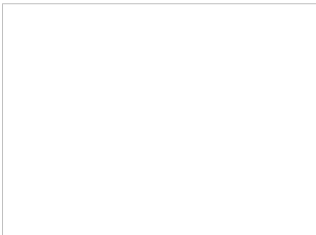
PDE4D; DPDE3, HSPDE4D,

PDE43, PDE4D, PDE4DN2,

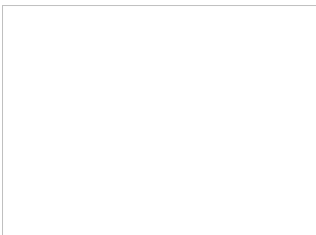
STRK1



mouse brain tissue were subjected to SDS PAGE followed by western blot with 12918-1-AP(PDE4D antibody) at dilution of 1:400



Immunohistochemistry of paraffin-embedded mouse colon tissue slide using 12918-1-AP(PDE4D Antibody) at dilution of 1:100 (under 10x lens).



Immunohistochemistry of paraffin-embedded mouse colon tissue slide using 12918-1-AP(PDE4D Antibody) at dilution of 1:100 (under 40x lens).

Background

PDE4D(cAMP-specific 3',5'-cyclic phosphodiesterase 4D) is also named as DPDE3, PDE43 and belongs to the cyclic nucleotide phosphodiesterase family and PDE4 subfamily. PDE4D subtype may be of particular importance as an antidepressant target in that it is regulated by repeated treatment with both norepinephrine and serotonin reuptake inhibitors as well as by the PDE4 inhibitor rolipram(PMID:16730340). It has at least 9 isoforms and all 9 PDE4D isoforms are expressed in healthy adult human hippocampus and in hippocampus from a patient with advanced Alzheimer disease(PMID:17353396).

Applications

Tested applications:	ELISA, WB, IHC
Cited applications:	WB
Species specificity:	Human,Mouse,Rat; other species not tested.
Cited species:	Mouse, recombinant protein
Calculated PDE4D MW:	809aa,91 kDa
Observed PDE4D MW:	91 kDa
Positive WB detected in	Mouse brain tissue, mouse pancreas tissue
Positive IHC detected in	Mouse colon tissue
Recommended dilution:	WB: 1:500-1:5000 IHC: 1:50-1:500

Application key: WB = Western blotting, IHC= Immunohistochemistry, IF = Immunofluorescence, IP = Immunoprecipitation

Immunogen information

Immunogen:	Ag3588
GenBank accession number:	BC036319
Gene ID (NCBI):	5144
Full name:	Phosphodiesterase 4D, cAMP-specific (phosphodiesterase E3 dunce homolog, Drosophila)

Product information

Purification method:	Antigen affinity purification
Storage:	PBS with 0.02% sodium azide and 50% glycerol pH 7.3. Store at -20°C.