

## HS1BP3 Polyclonal Antibody

Catalog number: 12845-1-AP

Size: 49 µg/150 µl

Source: Rabbit

Isotype: IgG

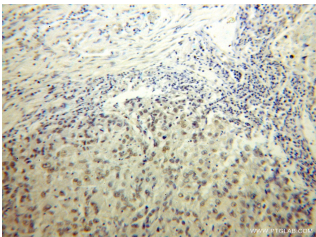
Synonyms:

HS1BP3; ETM2, FLJ14249,

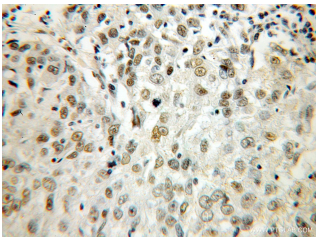
HCLS1 binding protein 3, HS1

binding protein 3, HS1 BP3,

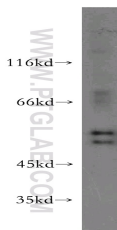
HS1BP3, HSP1BP 3



Immunohistochemical of paraffin-embedded human lung cancer using 12845-1-AP(HS1BP3 antibody) at dilution of 1:100 (under 10x lens)



Immunohistochemical of paraffin-embedded human lung cancer using 12845-1-AP(HS1BP3 antibody) at dilution of 1:100 (under 40x lens)



HT-1080 cells were subjected to SDS PAGE followed by western blot with 12845-1-AP(HS1BP3 antibody) at dilution of 1:100

### Applications

Tested applications:	ELISA, WB, IHC
Species specificity:	Human, Mouse, Rat; other species not tested.
Calculated HS1BP3 MW:	392aa, 43 kDa
Observed HS1BP3 MW:	55-58 kDa
Positive WB detected in	HT-1080 cells, HeLa cells, Jurkat cells, NIH/3T3 cells
Positive IHC detected in	Human lung cancer tissue
Recommended dilution:	WB: 1:200-1:2000 IHC: 1:20-1:200

Application key: WB = Western blotting, IHC = Immunohistochemistry, IF = Immunofluorescence, IP = Immunoprecipitation

### Immunogen information

Immunogen:	Ag3880
GenBank accession number:	BC027947
Gene ID (NCBI):	64342
Full name:	HCLS1 binding protein 3

### Product information

Purification method:	Antigen affinity purification
Storage:	PBS with 0.02% sodium azide and 50% glycerol pH 7.3. Store at -20°C.