

## DCBLD2 Polyclonal Antibody

Catalog number: 13168-1-AP

Size: 27 µg/150 µl

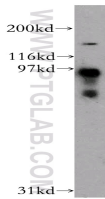
Source: Rabbit

Isotype: IgG

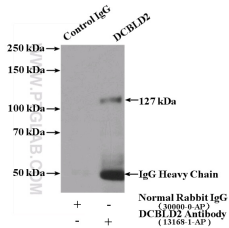
Synonyms:

DCBLD2; CLCP1, DCBLD2,

ESDN



human liver tissue were subjected to SDS PAGE followed by western blot with 13168-1-AP(DCBLD2 antibody) at dilution of 1:500



IP Result of anti-DCBLD2 (IP:13168-1-AP, 4µg; Detection:13168-1-AP 1:500) with HepG2 cells lysate 2400µg.

### Applications

Tested applications:	ELISA, WB, IP
Species specificity:	Human, Mouse, Rat; other species not tested.
Calculated DCBLD2 MW:	775aa, 89 kDa
Observed DCBLD2 MW:	93 kDa, 127 kDa
Positive WB detected in:	Human liver tissue, human brain tissue
Positive IP detected in:	HepG2 cells
Recommended dilution:	WB: 1:200-1:2000 IP: 1:200-1:2000

Application key: WB = Western blotting, IHC = Immunohistochemistry, IF = Immunofluorescence, IP = Immunoprecipitation

### Immunogen information

Immunogen:	Ag3821
GenBank accession number:	BC029658
Gene ID (NCBI):	131566
Full name:	Discoidin, CUB and LCCL domain containing 2

### Product information

Purification method:	Antigen affinity purification
Storage:	PBS with 0.02% sodium azide and 50% glycerol pH 7.3. Store at -20°C.