

PPM1A Polyclonal Antibody

Catalog number: 12961-1-AP

Size: 27 µg/150 µl

Source: Rabbit

Isotype: IgG

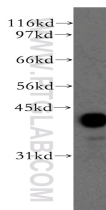
Synonyms:

PPM1A; FLJ42306, PP2C

ALPHA, PP2CA, PPM1A,

PPPM1A, Protein phosphatase

1A, Protein phosphatase IA



human liver tissue were subjected to SDS PAGE followed by western blot with 12961-1-AP(PPM1A antibody) at dilution of 1:900

Background

PPM1A(Protein phosphatase 1A) is also named as PPPM1A and belongs to the PP2C family. It is a serine/threonine protein phosphatase that is essential for regulating cellular stress responses in eukaryotes. PPM1A plays an important role in tumor suppression and that it negatively controls many signaling pathways which are critical for trophoblast invasion.(PMID:19404668). This protein distributes in both the cytoplasm and nucleus of mammalian cells(PMID:9003755). It has 2 isoforms produced by alternative splicing.

Applications

Tested applications:	ELISA, WB
Species specificity:	Human,Mouse,Rat; other species not tested.
Calculated PPM1A MW:	382aa,42 kDa
Observed PPM1A MW:	42 kDa
Positive WB detected in	Human liver tissue, HeLa cells, HepG2 cells, human heart tissue
Recommended dilution:	WB: 1:500-1:5000

Application key: WB = Western blotting, IHC = Immunohistochemistry, IF = Immunofluorescence, IP = Immunoprecipitation

Immunogen information

Immunogen:	Ag3645
GenBank accession number:	BC026691
Gene ID (NCBI):	5494
Full name:	Protein phosphatase 1A (formerly 2C), magnesium-dependent, alpha isoform

Product information

Purification method:	Antigen affinity purification
Storage:	PBS with 0.02% sodium azide and 50% glycerol pH 7.3. Store at -20°C.