

BBS9 Polyclonal Antibody

Catalog number: 14460-1-AP

Size: 56 µg/150 µl

Source: Rabbit

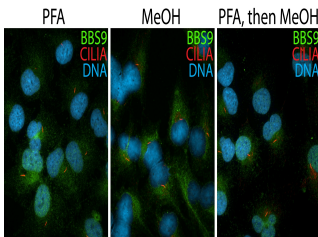
Isotype: IgG

Synonyms:

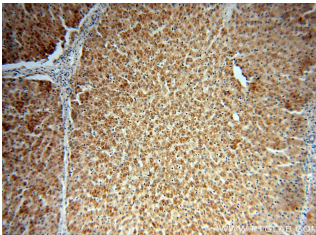
BBS9; B1, Bardet Biedl

syndrome 9, BBS9, C18, D1,

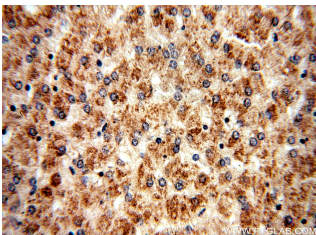
Protein PTHB1, PTHB1



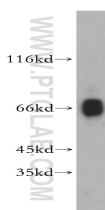
IF result (cytoplasm stain) of anti-BBS9 (14460-1-AP; 1:50) with hTERT-RPE1 cell by Dr. Moshe Kim.



Immunohistochemical of paraffin-embedded human liver using 14460-1-AP(BBS9 antibody) at dilution of 1:50 (under 10x lens)



Immunohistochemical of paraffin-embedded human liver using 14460-1-AP(BBS9 antibody) at dilution of 1:50 (under 40x lens)



mouse testis tissue were subjected to SDS PAGE followed by western blot with

Applications

| | |
|--------------------------|---|
| Tested applications: | ELISA, IHC, IF, WB, IP |
| Cited applications: | IF, WB |
| Species specificity: | Human, Mouse; other species not tested. |
| Cited species: | Mouse |
| Calculated BBS9 MW: | 99 kDa |
| Observed BBS9 MW: | 60 kDa |
| Positive WB detected in | Mouse testis tissue, human heart tissue |
| Positive IP detected in | Mouse testis tissue |
| Positive IHC detected in | Human liver tissue |
| Positive IF detected in | HTERT-RPE1 cells |
| Recommended dilution: | WB: 1:200-1:1000 IP: 1:200-1:2000 IHC: 1:20-1:200 IF: 1:10-1:100 |

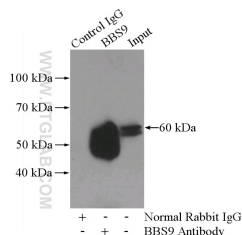
Application key: WB = Western blotting, IHC = Immunohistochemistry, IF = Immunofluorescence, IP = Immunoprecipitation

Immunogen information

| | |
|---------------------------|-------------------------|
| Immunogen: | Ag5665 |
| GenBank accession number: | BC032715 |
| Gene ID (NCBI): | 27241 |
| Full name: | Bardet-Biedl syndrome 9 |

Product information

| | |
|----------------------|--|
| Purification method: | Antigen affinity purification |
| Storage: | PBS with 0.02% sodium azide and 50% glycerol pH 7.3. Store at -20°C. |



IP Result of anti-BBS9 (IP:14460-1-AP, 4ug; Detection:14460-1-AP 1:500)

14460-1-AP(BBS9 antibody) with mouse testis tissue lysate
at dilution of 1:300 4000ug.