

PDLIM1/CLP36 Polyclonal Antibody

Catalog number: 11674-1-AP

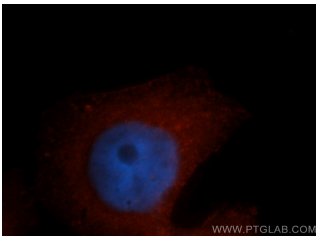
Size: 90 µg/150 µl

Source: Rabbit

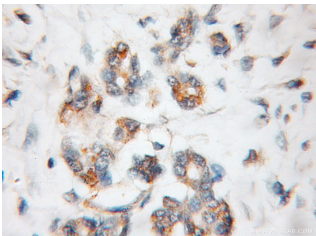
Isotype: IgG

Synonyms:

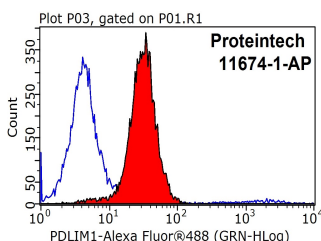
PDLIM1; CLIM1, CLP 36, CLP36, Elfin, hCLIM1, LIM domain protein CLP 36, PDLIM1, PDZ and LIM domain 1, PDZ and LIM domain protein 1



Immunofluorescent analysis of MCF-7 cells, using PDLIM1 antibody 11674-1-AP at 1:50 dilution and Rhodamine-labeled goat anti-rabbit IgG (red). Blue pseudocolor = DAPI (fluorescent DNA dye).



Immunohistochemical of paraffin-embedded human pancreas cancer using 11674-1-AP (PDLIM1, CLP36 antibody) at dilution of 1:50 (under 10x lens)



1X10⁶ MCF-7 cells were stained with 0.2 µg PDLIM1, CLP36 antibody (11674-1-AP, red) and control antibody (blue). Fixed with 90% MeOH blocked with 3% BSA (30 min). Alexa Fluor 488-conjugated AffiniPure Goat Anti-Rabbit IgG(H+L) with dilution 1:1000.

Background

PDLIM1, also named as CLIM1, CLP-36, CLP36, hCLIM1 and Elfin, is a member of the actinin-associated LIM protein (ALP)/enigma protein family, plays a role in neurite outgrowth in the peripheral nervous system. It is a cytoskeletal protein that may act as an adapter that brings other proteins (like kinases) to the cytoskeleton. PDLIM1 and PALLD formed a complex in the dorsal root ganglion (DRG) and PDLIM1 and PALLD were colocalized in the neurites and cell bodies of primary DRG neurons. PDLIM1 may interact with PALLD to influence neurite outgrowth during sciatic nerve regeneration. (PMID: 20381583)

Applications

Tested applications:	ELISA, IHC, IF, WB, FC, IP
Cited applications:	IF, WB
Species specificity:	Human, Mouse, Rat; other species not tested.
Cited species:	Human, rat
Calculated PDLIM1/CLP36 MW:	329aa, 36 kDa
Observed PDLIM1/CLP36 MW:	36 kDa
Positive WB detected in	Mouse lung tissue, human ileum tissue, human lung tissue, mouse heart tissue
Positive IP detected in	Mouse heart tissue
Positive IHC detected in	Human pancreas cancer tissue
Positive IF detected in	MCF-7 cells
Positive FC detected in	MCF-7 cells
Recommended dilution:	WB: 1:200-1:2000 IP: 1:200-1:2000 IHC: 1:20-1:200 IF: 1:20-1:200 FC: N/A

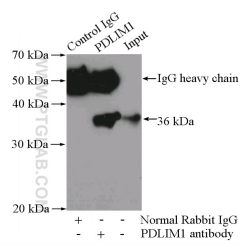
Application key: WB = Western blotting, IHC = Immunohistochemistry, IF = Immunofluorescence, IP = Immunoprecipitation

Immunogen information

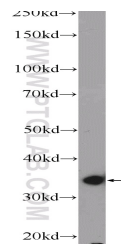
Immunogen:	Ag2274
GenBank accession number:	BC000915
Gene ID (NCBI):	9124
Full name:	PDZ and LIM domain 1

Product information

Purification method:	Antigen affinity purification
Storage:	PBS with 0.1% sodium azide and 50% glycerol pH 7.3. Store at -20°C.



IP Result of anti-PDLIM1,CLP36 (IP:11674-1-AP, 3ug; Detection:11674-1-AP 1:600) with mouse heart tissue lysate 4000ug.



mouse lung tissue were subjected to SDS PAGE followed by western blot with 11674-1-AP(PDLIM1,CLP36 Antibody) at dilution of 1:600