

## ATP1A1 Polyclonal Antibody

Catalog number: 14418-1-AP

Size: 45 µg/150 µl

Source: Rabbit

Isotype: IgG

Synonyms:

ATP1A1; ATP1A1, Na(+)/K(+)

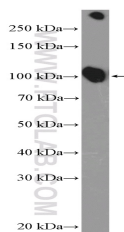
ATPase 1, Na(+)/K(+) ATPase

alpha 1 subunit, Na+/K+ ATPase

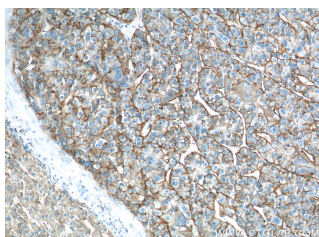
1, Sodium potassium ATPase

alpha 1 polypeptide, Sodium

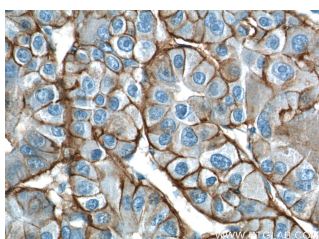
pump subunit alpha 1



mouse heart tissue were subjected to SDS PAGE followed by western blot with 14418-1-AP( ATP1A1 Antibody) at dilution of 1:1000



Immunohistochemistry of paraffin-embedded human liver cancer tissue slide using 14418-1-AP( ATP1A1 Antibody) at dilution of 1:200 (under 10x lens)



Immunohistochemistry of paraffin-embedded human liver cancer tissue slide using 14418-1-AP( ATP1A1 Antibody) at dilution of 1:200 (under 40x lens)

### Background

ATP1A1 is the catalytic component of Na<sup>+</sup>/K<sup>+</sup>-ATPase which is a membrane bound enzyme primarily involved in generation of Na<sup>+</sup> and K<sup>+</sup> gradients across plasma membranes and in determination of cytoplasmic Na<sup>+</sup> levels. ATP1A1 is a ubiquitously expressed membrane protein and often used as the marker or internal control for plasma membrane protein.

### Applications

|                          |   |
|--------------------------|---|
| Tested applications:     | ELISA, IP, IHC, WB  |
| Cited applications:      | WB  |
| Species specificity:     | Human, Mouse, Rat; other species not tested.                                      |
| Cited species:           | Mouse   |
| Calculated ATP1A1 MW:    | 113 kDa   |
| Observed ATP1A1 MW:      | 100kd   |
| Positive WB detected in  | Mouse heart tissue, A549 cells, COLO 320 cells, HEK-293 cells, human colon tissue |
| Positive IP detected in  | HEK-293 cells   |
| Positive IHC detected in | Human liver cancer tissue, human ovary tumor tissue                               |
| Recommended dilution:    | WB: 1:500-1:5000<br>IP: 1:200-1:1000<br>IHC: 1:20-1:200                           |

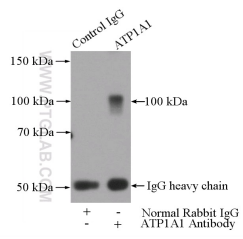
Application key: WB = Western blotting, IHC = Immunohistochemistry, IF = Immunofluorescence, IP = Immunoprecipitation

### Immunogen information

|                           |   |
|---------------------------|---|
| Immunogen:                | Ag5763  |
| GenBank accession number: | BC050359  |
| Gene ID (NCBI):           | 476   |
| Full name:                | ATPase, Na <sup>+</sup> /K <sup>+</sup> transporting, alpha 1 polypeptide |

### Product information

|                      |  |
|----------------------|--|
| Purification method: | Antigen affinity purification  |
| Storage:             | PBS with 0.02% sodium azide and 50% glycerol pH 7.3. Store at -20°C. |



**IP Result of anti-ATP1A1**  
**(IP:14418-1-AP, 4ug;**  
**Detection:14418-1-AP 1:300)**  
**with HEK-293 cells lysate**  
**2800ug.**