

LXN Polyclonal Antibody

Catalog number: 13056-1-AP

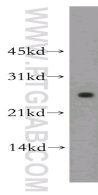
Size: 20 µg/150 µl

Source: Rabbit

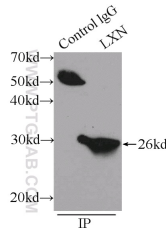
Isotype: IgG

Synonyms:

LXN; ECI, latexin, LXN, Protein MUM, TCI



mouse lung tissue were subjected to SDS PAGE followed by western blot with 13056-1-AP(LXN antibody) at dilution of 1:500



IP Result of anti-LXN (IP:13056-1-AP, 4ug; Detection:13056-1-AP 1:500) with mouse lung tissue lysate 5160ug.

Background

Latexin, also named as LTXN, LXN, ECI, MUM and TCI, is hardly reversible, non-competitive, and potent inhibitor of CPA1, CPA2 and CPA4. It may function as a neuroprotective mechanism against tau toxicity.

Applications

Tested applications:	ELISA, WB, IP
Cited applications:	IF, WB
Species specificity:	Human,Mouse,Rat; other species not tested.
Cited species:	Mouse
Calculated LXN MW:	222aa,26 kDa
Observed LXN MW:	26kd
Positive WB detected in	Mouse lung tissue, human brain tissue, mouse ovary tissue, mouse pancreas tissue
Positive IP detected in	Mouse lung tissue
Recommended dilution:	WB: 1:500-1:5000 IP: 1:200-1:2000

Application key: WB = Western blotting, IHC = Immunohistochemistry, IF = Immunofluorescence, IP = Immunoprecipitation

Immunogen information

Immunogen:	Ag3726
GenBank accession number:	BC005346
Gene ID (NCBI):	56925
Full name:	Latexin

Product information

Purification method:	Antigen affinity purification
Storage:	PBS with 0.1% sodium azide and 50% glycerol pH 7.3. Store at -20°C.