

TTL Polyclonal Antibody

Catalog number: 13618-1-AP

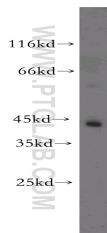
Size: 40 µg/150 µl

Source: Rabbit

Isotype: IgG

Synonyms:

TTL; TTL, Tubulin tyrosine
ligase, tubulin tyrosine ligase



SH-SY5Y cells were subjected to SDS
PAGE followed by western blot with
13618-1-AP(TTL antibody) at dilution
of 1:1000

Applications

Tested applications:	ELISA, WB
Cited applications:	IF, WB
Species specificity:	Human, Mouse, Rat; other species not tested.
Cited species:	Canine, mouse, rat
Calculated TTL MW:	377aa, 43 kDa
Observed TTL MW:	43-45 kDa
Positive WB detected in	SH-SY5Y cells, HeLa cells, human brain tissue, mouse brain tissue, rat brain tissue, Y79 cells
Recommended dilution:	WB: 1:500-1:5000

Application key: WB = Western blotting, IHC = Immunohistochemistry, IF = Immunofluorescence, IP = Immunoprecipitation

Immunogen information

Immunogen:	Ag4526
GenBank accession number:	BC036819
Gene ID (NCBI):	150465
Full name:	Tubulin tyrosine ligase

Product information

Purification method:	Antigen affinity purification
Storage:	PBS with 0.02% sodium azide and 50% glycerol pH 7.3. Store at -20°C.