

SRPK1 Polyclonal Antibody

Catalog number: 14073-1-AP

Size: 40 µg/150 µl

Source: Rabbit

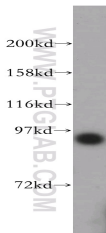
Isotype: IgG

Synonyms:

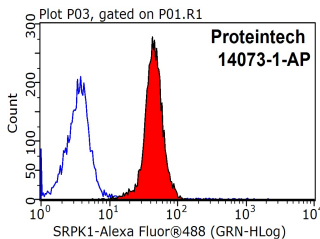
SRPK1; SFRS protein kinase 1,

SFRSK1, SR protein specific

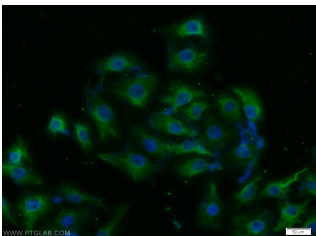
kinase 1, SRPK1



Jurkat cells were subjected to SDS PAGE followed by western blot with 14073-1-AP (SRPK1 antibody) at dilution of 1:1000



1X10⁶ MCF-7 cells were stained with 0.2µg SRPK1 antibody (14073-1-AP, red) and control antibody (blue). Fixed with 90% MeOH blocked with 3% BSA (30 min). Alexa Fluor 488-conjugated AffiniPure Goat Anti-Rabbit IgG(H+L) with dilution 1:1500.



Immunofluorescent analysis of SH-SY5Y cells using 14073-1-AP (SRPK1 Antibody) at dilution of 1:25 and Alexa Fluor 488-conjugated AffiniPure Goat Anti-Rabbit IgG(H+L)

Background

SRPK1 (serine-arginine protein kinase 1) is a protein kinase that specifically phosphorylates proteins containing serine-arginine-rich domains. Its substrates include a family of SR proteins that are key regulators of mRNA AS (alternative splicing). SRPK1 may be localized both in the cytoplasm and nucleus and translocates between these compartments under various conditions (e.g. cell cycle and stress). It is able to phosphorylate SR proteins both in cytoplasm and nucleus (the significance of which remains incompletely understood) and thus regulate the activity of these proteins by affecting their ability to bind other proteins and/or RNA as well as their intracellular localization.(PMID:22817743). This protein has 2 isoforms produced by alternative splicing.

Applications

Tested applications:	ELISA, WB, FC, IF, IP, IHC
Species specificity:	Human, Mouse, Rat; other species not tested.
Calculated SRPK1 MW:	92.4 kDa
Observed SRPK1 MW:	95 kDa
Positive WB detected in	Jurkat cells, L02 cells
Positive IP detected in	Mouse testis tissue
Positive IHC detected in	Human breast cancer tissue, human testis tissue
Positive IF detected in	SH-SY5Y cells
Positive FC detected in	MCF-7 cells
Recommended dilution:	WB: 1:1000-1:10000
	IP: 1:500-1:5000
	IHC: 1:20-1:200
	IF: 1:10-1:100
	FC: N/A

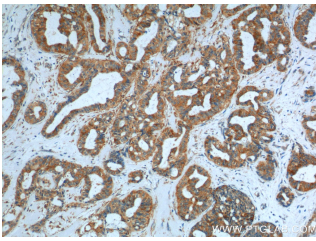
Application key: WB = Western blotting, IHC = Immunohistochemistry, IF = Immunofluorescence, IP = Immunoprecipitation

Immunogen information

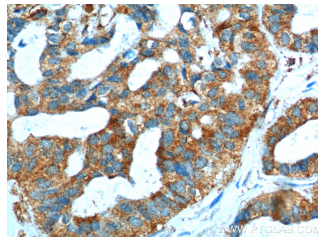
Immunogen:	Ag5149
GenBank accession number:	BC038292
Gene ID (NCBI):	6732
Full name:	SFRS protein kinase 1

Product information

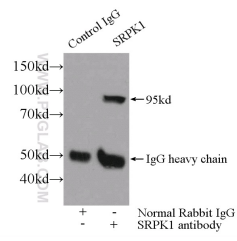
Purification method:	Antigen affinity purification
Storage:	PBS with 0.02% sodium azide and 50% glycerol pH 7.3. Store at -20°C.



Immunohistochemistry of paraffin-embedded human breast cancer tissue slide using 14073-1-AP (SRPK1 Antibody) at dilution of 1:200 (under 10x lens).



Immunohistochemistry of paraffin-embedded human breast cancer tissue slide using 14073-1-AP (SRPK1 Antibody) at dilution of 1:200 (under 40x lens).



IP Result of anti-SRPK1 (IP:14073-1-AP, 3ug; Detection:14073-1-AP 1:1000) with mouse testis tissue lysate 3000ug.