

Kallikrein 5 Polyclonal Antibody

Catalog number: 10514-2-AP

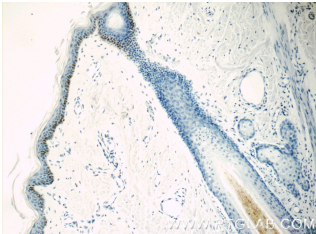
Size: 64 µg/150 µl

Source: Rabbit

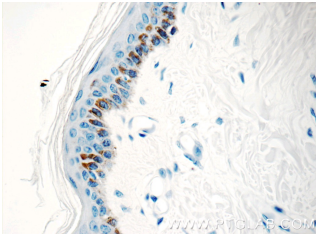
Isotype: IgG

Synonyms:

KLK5; Kallikrein 5, Kallikrein like protein 2, kallikrein related peptidase 5, KLK L2, KLK5, KLKL2, SCTE, Stratum corneum tryptic enzyme



Immunohistochemistry of paraffin-embedded human skin tissue slide using 10514-2-AP (KLK5 Antibody) at dilution of 1:50 (under 10x lens)



Immunohistochemistry of paraffin-embedded human skin tissue slide using 10514-2-AP (KLK5 Antibody) at dilution of 1:50 (under 40x lens)

Background

KLK5(Kallikrein-5) is also named as SCTE and belongs to the kallikrein subfamily. This protein is predicted to be a secreted serine protease, and the enzyme is found to have proteolytic activity. In serum and ascites fluid, the protein is present in two forms, one at a relatively lower molecular mass (around 50 kDa), and another one around 150-180 kDa and native KLK5 is highly glycosylated or that it may interact with the gel filtration column, leading to delayed retention(PMID:12873991). The activation of the enzyme has been shown to require cleavage of an arginine residue (Arg66-Ile67), suggesting that a trypsin-like serine protease may be involved in this process(PMID:15713679).

Applications

Tested applications:	ELISA, IHC
Cited applications:	IF, WB
Species specificity:	Human; other species not tested.
Cited species:	Human
Calculated Kallikrein 5 MW:	32 kDa
Observed Kallikrein 5 MW:	
Positive IHC detected in	Human skin tissue
Recommended dilution:	IHC: 1:20-1:200

Application key: WB = Western blotting, IHC = Immunohistochemistry, IF = Immunofluorescence, IP = Immunoprecipitation

Immunogen information

Immunogen:	Ag0799
GenBank accession number:	BC008036
Gene ID (NCBI):	25818
Full name:	Kallikrein-related peptidase 5

Product information

Purification method:	Antigen affinity purification
Storage:	PBS with 0.1% sodium azide and 50% glycerol pH 7.3. Store at -20°C.