

SCEL Polyclonal Antibody

Catalog number: 11906-1-AP

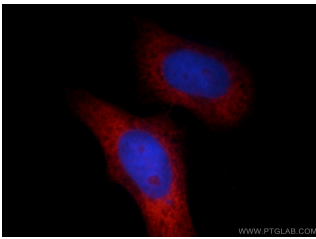
Size: 21 µg/150 µl

Source: Rabbit

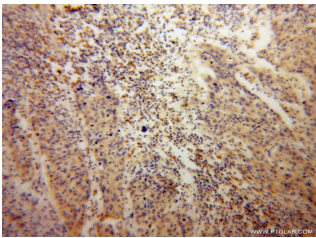
Isotype: IgG

Synonyms:

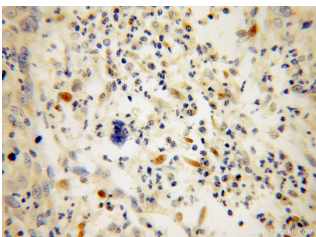
SCEL; FLJ21667, SCEL, sciellin



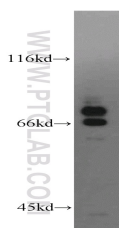
Immunofluorescent analysis of HepG2 cells, using SCEL antibody 11906-1-AP at 1:25 dilution and Rhodamine-labeled goat anti-rabbit IgG (red). Blue pseudocolor = DAPI (fluorescent DNA dye).



Immunohistochemical of paraffin-embedded human cervical cancer using 11906-1-AP(SCEL antibody) at dilution of 1:100 (under 10x lens)



Immunohistochemical of paraffin-embedded human cervical cancer using 11906-1-AP(SCEL antibody) at dilution of 1:100 (under 40x lens)



A431 cells were subjected to SDS PAGE followed by western blot with 11906-1-

Applications

Tested applications:	ELISA, WB, IHC, IF, FC
Species specificity:	Human; other species not tested.
Calculated SCEL MW:	668aa,75 kDa
Observed SCEL MW:	70-78 kDa
Positive WB detected in	A431 cells, human skin tissue
Positive IHC detected in	Human cervical cancer tissue, human lung cancer tissue
Positive IF detected in	HepG2 cells
Positive FC detected in	HeLa cells
Recommended dilution:	WB: 1:200-1:2000
	IHC: 1:20-1:200
	IF: 1:10-1:100
	FC: N/A

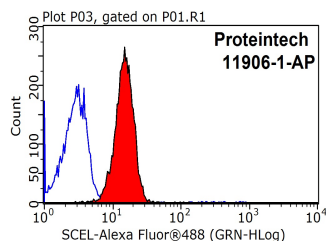
Application key: WB = Western blotting, IHC = Immunohistochemistry, IF = Immunofluorescence, IP = Immunoprecipitation

Immunogen information

Immunogen:	Ag2578
GenBank accession number:	BC020726
Gene ID (NCBI):	8796
Full name:	Sciellin

Product information

Purification method:	Antigen affinity purification
Storage:	PBS with 0.1% sodium azide and 50% glycerol pH 7.3. Store at -20°C.



1X10⁶ HeLa cells were stained with 0.2ug SCEL antibody (11906-1-AP, red)

AP(SCEL antibody) at dilution of 1:300 and control antibody (blue). Fixed with 90% MeOH blocked with 3% BSA (30 min). Alexa Fluor 488-conjugated AffiniPure Goat Anti-Rabbit IgG(H+L) with dilution 1:1500.