

XK Polyclonal Antibody

Catalog number: 12830-1-AP

Size: 31 µg/150 µl

Source: Rabbit

Isotype: IgG

Synonyms:

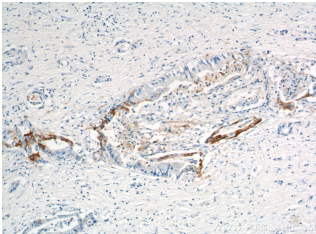
XK; Kell complex 37 kDa

component, KX, Kx antigen,

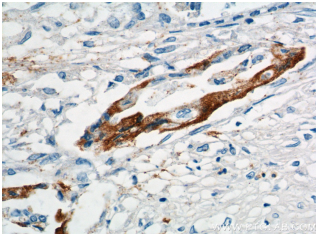
Membrane transport protein

XK, X1k, XK, XK related protein

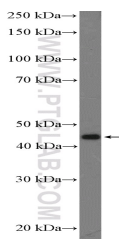
1, XKR1, XRG1



Immunohistochemistry of paraffin-embedded human pancreas cancer tissue slide using 12830-1-AP(XK Antibody) at dilution of 1:200 (under 10x lens).



Immunohistochemistry of paraffin-embedded human pancreas cancer tissue slide using 12830-1-AP(XK Antibody) at dilution of 1:200 (under 40x lens).



mouse pancreas tissue were subjected to SDS PAGE followed by western blot with 12830-1-AP(XK Antibody) at dilution of 1:600

Background

XK, also named as XKR1 and XRG1, is responsible for the Kx blood group system. XK forms a functional complex with the Kell glycoprotein. It represents a crucial factor for the maintenance of normal muscle structure and function.

Applications

Tested applications:	ELISA, IHC, WB
Species specificity:	Human, Mouse, Rat; other species not tested.
Calculated XK MW:	444aa, 51 kDa
Observed XK MW:	45-51 kDa
Positive WB detected in	Mouse pancreas tissue, MCF-7 cells
Positive IHC detected in	Human pancreas cancer tissue
Recommended dilution:	WB: 1:200-1:2000 IHC: 1:50-1:400

Application key: WB = Western blotting, IHC = Immunohistochemistry, IF = Immunofluorescence, IP = Immunoprecipitation

Immunogen information

Immunogen:	Ag3550
GenBank accession number:	BC036019
Gene ID (NCBI):	7504
Full name:	X-linked Kx blood group (McLeod syndrome)

Product information

Purification method:	Antigen affinity purification
Storage:	PBS with 0.1% sodium azide and 50% glycerol pH 7.3. Store at -20°C.