

ALS2 Polyclonal Antibody

Catalog number: 13998-1-AP

Size: 30 µg/150 µl

Source: Rabbit

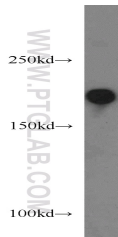
Isotype: IgG

Synonyms:

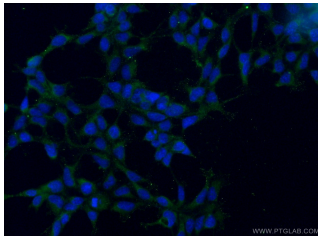
ALS2; ALS2, ALS2CR6, Alsin,

ALSJ, FLJ31851, IAHSF,

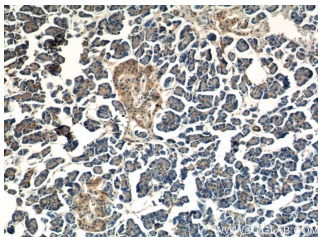
KIAA1563, PLSJ



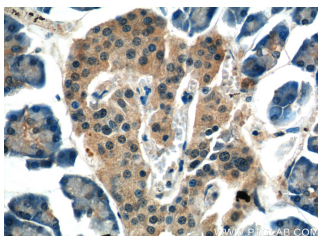
HEK-293 cells were subjected to SDS PAGE followed by western blot with 13998-1-AP(ALS2 antibody) at dilution of 1:500



Immunofluorescent analysis of (-20 Ethanol) fixed HEK-293 cells using 13998-1-AP(ALS2 Antibody) at dilution of 1:50 and Alexa Fluor 488-conjugated AffiniPure Goat Anti-Rabbit IgG(H+L)



Immunohistochemistry of paraffin-embedded human pancreas tissue slide using 13998-1-AP(ALS2 Antibody) at dilution of 1:50 (under 10x lens)



Applications

Tested applications:	ELISA, WB, IHC, IF, IP
Species specificity:	Human, Mouse, Rat; other species not tested.
Calculated ALS2 MW:	1657aa, 184 kDa
Observed ALS2 MW:	185 kDa
Positive WB detected in	HEK-293 cells
Positive IP detected in	HEK-293 cells
Positive IHC detected in	Human pancreas tissue
Positive IF detected in	HEK-293 cells
Recommended dilution:	WB: 1:200-1:2000
	IP: 1:200-1:1000
	IHC: 1:20-1:200
	IF: 1:20-1:200

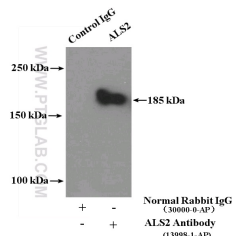
Application key: WB = Western blotting, IHC = Immunohistochemistry, IF = Immunofluorescence, IP = Immunoprecipitation

Immunogen information

Immunogen:	Ag5087
GenBank accession number:	BC029174
Gene ID (NCBI):	57679
Full name:	Amyotrophic lateral sclerosis 2 (juvenile)

Product information

Purification method:	Antigen affinity purification
Storage:	PBS with 0.02% sodium azide and 50% glycerol pH 7.3. Store at -20°C.



Immunohistochemistry of
paraffin-embedded human
pancreas tissue slide using
13998-1-AP(ALS2 Antibody)
at dilution of 1:50 (under 40x
lens)

IP Result of anti-ALS2
(IP:13998-1-AP, 4ug;
Detection:13998-1-AP 1:300)
with HEK-293 cells lysate
4000ug.