

STOML3 Polyclonal Antibody

Catalog number: 13316-1-AP

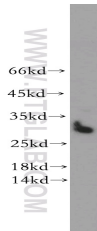
Size: 20 µg/150 µl

Source: Rabbit

Isotype: IgG

Synonyms:

STOML3; Epb7.2l; SRO



HeLa cells were subjected to SDS PAGE followed by western blot with 13316-1-AP (STOML3 Antibody) at dilution of 1:1000

Applications

Tested applications:	ELISA, WB
Species specificity:	Human, mouse, rat; other species not tested.
Positive WB detected in:	HeLa cells, MCF7 cells, SH-SY5Y cells
Calculated STOML3 MW:	291aa, 32kd
Observed STOML3 MW:	30kd
Recommended dilution:	WB: 1:500-1:5000

Application key: WB = Western blotting, IHC = Immunohistochemistry, IF = Immunofluorescence, IP = Immunoprecipitation, FC = Flow cytometry

Immunogen information

Immunogen:	Ag4160
GenBank accession number:	BC025760
Gene ID (NCBI):	161003
Full name:	Stomatin (EPB72)-like 3

Product information

Purification method:	Antigen affinity purification
Storage:	PBS with 0.02% sodium azide and 50% glycerol pH 7.3. Store at -20°C.