

Dopamine beta Hydroxylase Polyclonal Antibody

Catalog number: 10777-1-AP

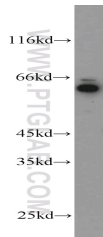
Size: 27 µg/150 µl

Source: Rabbit

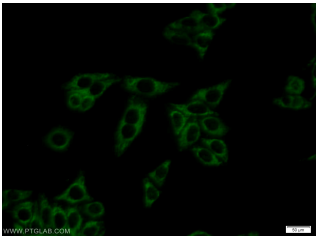
Isotype: IgG

Synonyms:

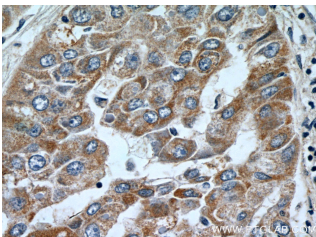
DBH; DBH, Dopamine beta Hydroxylase, Dopamine beta monoxygenase



HepG2 cells were subjected to SDS PAGE followed by western blot with 10777-1-AP (DBH antibody) at dilution of 1:1000



Immunofluorescent analysis of HepG2 cells using 10777-1-AP (DBH Antibody) at dilution of 1:25 and Alexa Fluor 488-conjugated AffiniPure Goat Anti-Rabbit IgG(H+L)



Immunohistochemistry of paraffin-embedded human liver cancer tissue slide using 10777-1-AP (DBH Antibody) at dilution of 1:100 (under 40x lens).

Background

DBH (Dopamine beta-hydroxylase) belongs to the copper type II ascorbate-dependent monooxygenase family and catalyzes the oxidative hydroxylation of dopamine to norepinephrine. It is almost exclusively located in the adrenal medulla and the synaptic vesicles of postganglionic sympathetic neurons (PMID:11857564). The DBH is glycosylated (63--67 kDa) while still in the membrane (PMID:2325165) and it can form a dimer (PMID:8546710). Defects in DBH are the cause of dopamine beta-hydroxylase deficiency (DBH deficiency).

Applications

Tested applications:	ELISA, WB, IF, IHC
Species specificity:	Human; other species not tested.
Calculated Dopamine beta Hydroxylase MW:	64.8 kDa
Observed Dopamine beta Hydroxylase MW:	63 kDa
Positive WB detected in	HepG2 cells, HeLa cells, SH-SY5Y cells
Positive IHC detected in	Human liver cancer tissue
Positive IF detected in	HepG2 cells, HeLa cells
Recommended dilution:	WB: 1:500-1:5000 IHC: 1:50-1:500 IF: 1:10-1:100

Application key: WB = Western blotting, IHC = Immunohistochemistry, IF = Immunofluorescence, IP = Immunoprecipitation

Immunogen information

Immunogen:	Ag1196
GenBank accession number:	BC017174
Gene ID (NCBI):	1621
Full name:	Dopamine beta-hydroxylase (dopamine beta-monooxygenase)

Product information

Purification method:	Antigen affinity purification
Storage:	PBS with 0.1% sodium azide and 50% glycerol pH 7.3. Store at -20°C.