

## NOMO2 Polyclonal Antibody

Catalog number: 14328-1-AP

Size: 34 µg/150 µl

Source: Rabbit

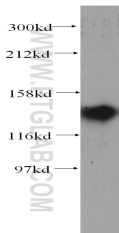
Isotype: IgG

Synonyms:

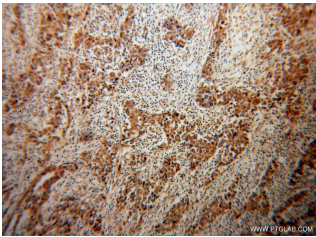
NOMO2; NODAL modulator 2,

Nomo, NOMO2, PM5, pM5

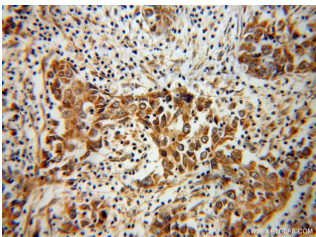
protein 2



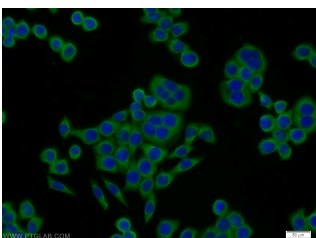
BxPC-3 cells were subjected to SDS PAGE followed by western blot with 14328-1-AP (NOMO2 antibody) at dilution of 1:300



Immunohistochemical of paraffin-embedded human pancreas cancer using 14328-1-AP (NOMO2 antibody) at dilution of 1:100 (under 10x lens)



Immunohistochemical of paraffin-embedded human pancreas cancer using 14328-1-AP (NOMO2 antibody) at dilution of 1:100 (under 40x lens)



Immunofluorescent analysis of BxPC-3 cells using 14328-1-

### Applications

<b>Tested applications:</b>	ELISA, WB, IHC, IF, IP
<b>Species specificity:</b>	Human; other species not tested.
<b>Calculated NOMO2 MW:</b>	139 kDa
<b>Observed NOMO2 MW:</b>	130 kDa
<b>Positive WB detected in</b>	BxPC-3 cells, HEK-293 cells
<b>Positive IP detected in</b>	HEK-293 cells
<b>Positive IHC detected in</b>	Human pancreas cancer tissue
<b>Positive IF detected in</b>	BxPC-3 cells
<b>Recommended dilution:</b>	WB: 1:500-1:5000 IP: 1:500-1:5000 IHC: 1:20-1:200 IF: 1:10-1:100

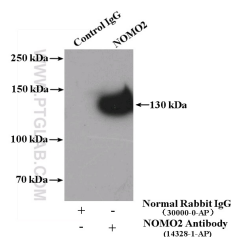
Application key: WB = Western blotting, IHC = Immunohistochemistry, IF = Immunofluorescence, IP = Immunoprecipitation

### Immunogen information

<b>Immunogen:</b>	Ag5595
<b>GenBank accession number:</b>	BC041131
<b>Gene ID (NCBI):</b>	283820
<b>Full name:</b>	NODAL modulator 2

### Product information

<b>Purification method:</b>	Antigen affinity purification
<b>Storage:</b>	PBS with 0.02% sodium azide and 50% glycerol pH 7.3. Store at -20°C.



IP Result of anti-NOMO2 (IP:14328-1-AP, 4ug;

AP( NOMO2 Antibody) at  
dilution of 1:25 and Alexa  
Fluor 488-conjugated  
AffiniPure Goat Anti-Rabbit  
IgG(H+L)

Detection:14328-1-AP 1:1000)  
with HEK-293 cells lysate  
2400ug.