

LRRC1 Polyclonal Antibody

Catalog number: 10128-2-AP

Size: 22 µg/150 µl

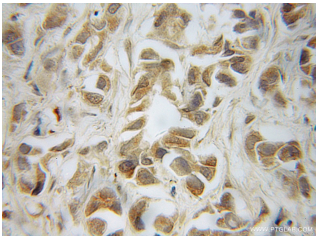
Source: Rabbit

Isotype: IgG

Synonyms:

LRRC1; FLJ10775; FLJ11834;

LANO; dJ523E19.1



Immunohistochemistry of paraffin-embedded human prostate cancer using 10128-2-AP (LRRC1 Antibody) at Dilution 1:50 (under 10x lens)

Applications

Tested applications:	ELISA, IHC
Species specificity:	Human, mouse, rat; other species not tested.
Calculated LRRC1 MW:	59kd
Observed LRRC1 MW:	
Positive IHC detected in:	Human prostate cancer
Recommended dilution:	IHC: 1:20-1:200

Application key: WB = Western blotting, IHC = Immunohistochemistry, IF = Immunofluorescence, IP = Immunoprecipitation, FC = Flow cytometry

Immunogen information

Immunogen:	Ag0175
GenBank accession number:	BC003193
Gene ID (NCBI):	55227
Full name:	Leucine rich repeat containing 1

Product information

Purification method:	Antigen affinity purification
Storage:	PBS with 0.1% sodium azide and 50% glycerol pH 7.3. Store at -20°C.