

PDE12 Polyclonal Antibody

Catalog number: 12753-1-AP

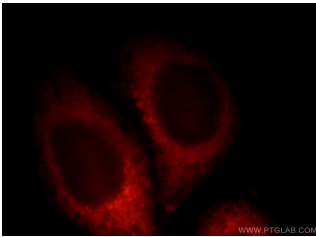
Size: 21 µg/150 µl

Source: Rabbit

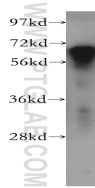
Isotype: IgG

Synonyms:

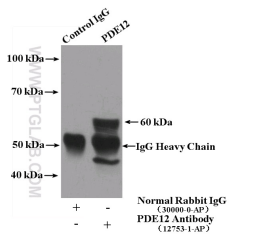
PDE12; 2 PDE, 2' PDE, 2,5 phosphodiesterase 12, PDE12, phosphodiesterase 12



Immunofluorescent analysis of HepG2 cells, using PDE12 antibody 12753-1-AP at 1:25 dilution and Rhodamine-labeled goat anti-rabbit IgG (red).



human brain tissue were subjected to SDS PAGE followed by western blot with 12753-1-AP(PDE12 antibody) at dilution of 1:500



IP Result of anti-PDE12 (IP:12753-1-AP, 4µg; Detection:12753-1-AP 1:500) with mouse brain tissue lysate 4000µg.

Applications

Tested applications:	ELISA, WB, IF, IP
Species specificity:	Human, Mouse, Rat; other species not tested.
Calculated PDE12 MW:	472aa, 52 kDa
Observed PDE12 MW:	65 kDa
Positive WB detected in	Human brain tissue, HEK-293 cells
Positive IP detected in	Mouse brain tissue
Positive IF detected in	HepG2 cells
Recommended dilution:	WB: 1:500-1:5000 IP: 1:200-1:2000 IF: 1:10-1:100

Application key: WB = Western blotting, IHC = Immunohistochemistry, IF = Immunofluorescence, IP = Immunoprecipitation

Immunogen information

Immunogen:	Ag3217
GenBank accession number:	BC034978
Gene ID (NCBI):	201626
Full name:	Phosphodiesterase 12

Product information

Purification method:	Antigen affinity purification
Storage:	PBS with 0.1% sodium azide and 50% glycerol pH 7.3. Store at -20°C.