

KPNA4 Polyclonal Antibody

Catalog number: 12463-1-AP

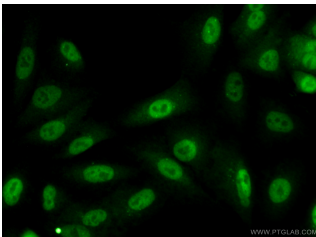
Size: 22 µg/150 µl

Source: Rabbit

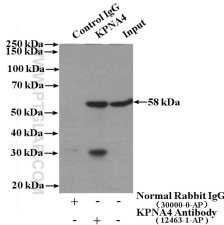
Isotype: IgG

Synonyms:

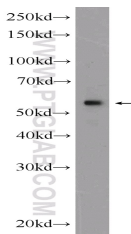
KPNA4; Importin alpha Q1,
Importin subunit alpha 4,
IPOA3, Karyopherin subunit
alpha 4, KPNA4, QIP1, SRP3



Immunofluorescent analysis of (10% Formaldehyde) fixed A549 cells using 12463-1-AP(KPNA4 Antibody) at dilution of 1:50 and Alexa Fluor 488-conjugated AffiniPure Goat Anti-Rabbit IgG(H+L)



IP Result of anti-KPNA4 (IP:12463-1-AP, 4µg; Detection:12463-1-AP 1:600) with A549 cells lysate 2000µg.



A549 cells were subjected to SDS PAGE followed by western blot with 12463-1-AP(KPNA4 Antibody) at dilution of 1:600

Applications

Tested applications:	ELISA, WB, IP, IF
Species specificity:	Human, Mouse, Rat; other species not tested.
Calculated KPNA4 MW:	521aa, 58 kDa
Observed KPNA4 MW:	58 kDa
Positive WB detected in	A549 cells, human lung tissue, Jurkat cells
Positive IP detected in	A549 cells
Positive IF detected in	A549 cells
Recommended dilution:	WB: 1:200-1:2000 IP: 1:200-1:2000 IF: 1:20-1:200

Application key: WB = Western blotting, IHC = Immunohistochemistry, IF = Immunofluorescence, IP = Immunoprecipitation

Immunogen information

Immunogen:	Ag3133
GenBank accession number:	BC034493
Gene ID (NCBI):	3840
Full name:	Karyopherin alpha 4 (importin alpha 3)

Product information

Purification method:	Antigen affinity purification
Storage:	PBS with 0.1% sodium azide and 50% glycerol pH 7.3. Store at -20°C.