

## CD42b Polyclonal Antibody

Catalog number: 12860-1-AP

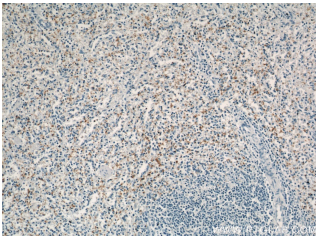
Size: 50 µg/150 µl

Source: Rabbit

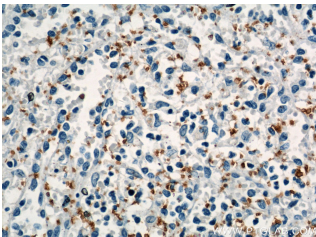
Isotype: IgG

Synonyms:

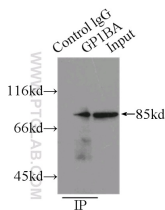
GP1BA; BSS, CD42b, CD42b alpha, GP1B, GP1BA



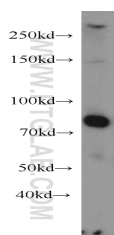
Immunohistochemical of paraffin-embedded human spleen using 12860-1-AP(GP1BA antibody) at dilution of 1:50 (under 10x lens)



Immunohistochemical of paraffin-embedded human spleen using 12860-1-AP(GP1BA antibody) at dilution of 1:50 (under 40x lens)



IP Result of anti-GP1BA (IP:12860-1-AP, 3µg; Detection:12860-1-AP 1:500) with A431 cells lysate 3000µg.



A431 cells were subjected to SDS PAGE followed by western blot with 12860-1-AP(GP1BA antibody) at

### Background

GP1BA, also named as CD42b, is a surface membrane protein of platelets, participates in the formation of platelet plugs by binding to the A1 domain of vWF, which is already bound to the subendothelium. It has a heterodimer form which composed of GP1BA and GP1BB. It is 145kd in platelet. It is Glycocalicin and phopho and showed 80-85kd in Jurkat.

### Applications

Tested applications:	ELISA, WB, IHC, IP
Cited applications:	IHC
Species specificity:	Human; other species not tested.
Cited species:	Human
Calculated CD42b MW:	626aa,69 kDa
Observed CD42b MW:	80-85 kDa,145 kDa
Positive WB detected in	A431 cells, Jurkat cells, SH-SY5Y cells
Positive IP detected in	A431 cells
Positive IHC detected in	Human spleen tissue
Recommended dilution:	WB: 1:200-1:2000 IP: 1:200-1:2000 IHC: 1:20-1:200

Application key: WB = Western blotting, IHC = Immunohistochemistry, IF = Immunofluorescence, IP = Immunoprecipitation

### Immunogen information

Immunogen:	Ag3893
GenBank accession number:	BC027955
Gene ID (NCBI):	2811
Full name:	Glycoprotein Ib (platelet), alpha polypeptide

### Product information

Purification method:	Antigen affinity purification
Storage:	PBS with 0.02% sodium azide and 50% glycerol pH 7.3. Store at -20°C.

dilution of 1:500