

RHOA Polyclonal Antibody

Catalog number: 10749-1-AP

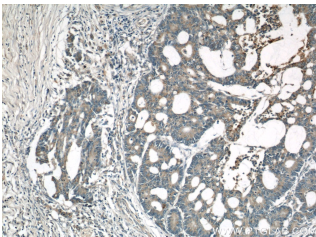
Size: 20 µg/150 µl

Source: Rabbit

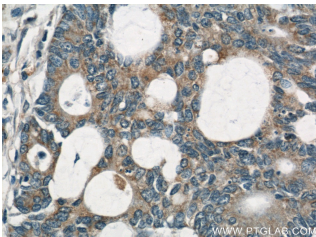
Isotype: IgG

Synonyms:

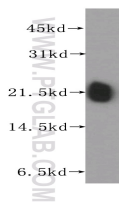
RHOA; ARH12, ARHA, h12, Rho cDNA clone 12, RHO12, RHOA, RHOH12, Transforming protein RhoA



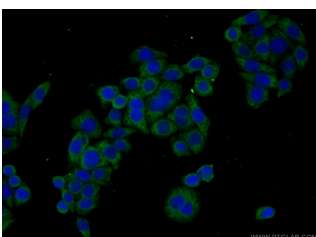
Immunohistochemical of paraffin-embedded human colon cancer using 10749-1-AP(RHOA antibody) at dilution of 1:50 (under 10x lens)



Immunohistochemical of paraffin-embedded human colon cancer using 10749-1-AP(RHOA antibody) at dilution of 1:50 (under 40x lens)



human brain tissue were subjected to SDS PAGE followed by western blot with 10749-1-AP(RHOA antibody) at dilution of 1:400



Immunofluorescent analysis

Background

RhoA is a small GTPase protein known to regulate the actin cytoskeleton in the formation of stress fibers. It acts upon two known effector proteins: Rho kinase (ROCK) and mdia (Diaphenous protein). RhoA is part of a larger family of related proteins known as the Ras superfamily.

Applications

Tested applications:	ELISA, WB, IHC, IF
Cited applications:	IHC, WB
Species specificity:	Human, Mouse, Rat; other species not tested.
Cited species:	Human, mouse, rat, <i>S. litura</i>
Calculated RHOA MW:	22 kDa
Observed RHOA MW:	22 kDa
Positive WB detected in	Human brain tissue, HeLa cells, MCF7 cells, mouse brain tissue, rat brain tissue
Positive IHC detected in	Human colon cancer tissue, human lymphoma tissue
Positive IF detected in	HeLa cells
Recommended dilution:	WB: 1:200-1:1000 IHC: 1:20-1:200 IF: 1:10-1:100

Application key: WB = Western blotting, IHC = Immunohistochemistry, IF = Immunofluorescence, IP = Immunoprecipitation

Immunogen information

Immunogen:	Ag1141
GenBank accession number:	BC005976
Gene ID (NCBI):	387
Full name:	Ras homolog gene family, member A

Product information

Purification method:	Antigen affinity purification
Storage:	PBS with 0.1% sodium azide and 50% glycerol pH 7.3. Store at -20°C.

of HeLa cells using 10749-1-
AP(RHOA Antibody) at
dilution of 1:25 and Alexa
Fluor 488-conjugated
AffiniPure Goat Anti-Rabbit
IgG(H+L)