

Calpastatin Polyclonal Antibody

Catalog number: 12250-1-AP

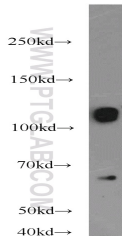
Size: 37 µg/150 µl

Source: Rabbit

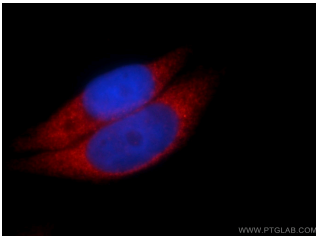
Isotype: IgG

Synonyms:

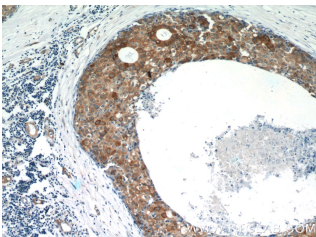
CAST; BS 17, Calpain inhibitor, calpastatin, CAST, Sperm BS 17 component



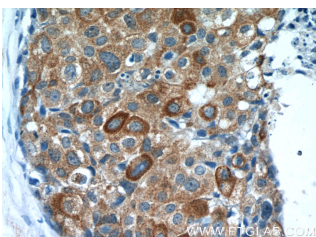
HeLa cells were subjected to SDS PAGE followed by western blot with 12250-1-AP (CAST antibody) at dilution of 1:1000



Immunofluorescent analysis of HeLa cells using 12250-1-AP (CAST Antibody) at dilution of 1:25 and Rhodamine-Goat anti-Rabbit IgG



Immunohistochemistry of paraffin-embedded human breast cancer tissue slide using 12250-1-AP (CAST Antibody) at dilution of 1:50 (under 10x lens)



Immunohistochemistry of paraffin-embedded human

Applications

Tested applications:	ELISA, IF, IHC, WB, IP
Cited applications:	WB
Species specificity:	Human; other species not tested.
Cited species:	Human
Calculated Calpastatin MW:	667aa, 72 kDa
Observed Calpastatin MW:	120 kDa
Positive WB detected in	HeLa cells, K-562 cells, MCF7 cells
Positive IP detected in	K-562 cells
Positive IHC detected in	Human breast cancer tissue, human colon cancer tissue, human skeletal muscle tissue
Positive IF detected in	HeLa cells
Recommended dilution:	WB: 1:500-1:5000 IP: 1:500-1:5000 IHC: 1:20-1:200 IF: 1:10-1:100

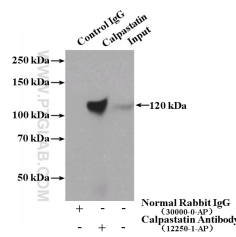
Application key: WB = Western blotting, IHC = Immunohistochemistry, IF = Immunofluorescence, IP = Immunoprecipitation

Immunogen information

Immunogen:	Ag2897
GenBank accession number:	BC013579
Gene ID (NCBI):	831
Full name:	Calpastatin

Product information

Purification method:	Antigen affinity purification
Storage:	PBS with 0.1% sodium azide and 50% glycerol pH 7.3. Store at -20°C.



IP Result of anti-CAST
(IP:12250-1-AP, 4ug;

breast cancer tissue slide
using 12250-1-AP(CAST
Antibody) at dilution of 1:50
(under 40x lens)

Detection:12250-1-AP 1:1000)
with K-562 cells lysate 4000ug.