

SCO1 Polyclonal Antibody

Catalog number: 12614-1-AP

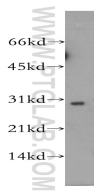
Size: 20 µg/150 µl

Source: Rabbit

Isotype: IgG

Synonyms:

SCO1; SCO1, SCOD1



human heart tissue were subjected to SDS PAGE followed by western blot with 12614-1-AP(SCO1 antibody) at dilution of 1:400

Background

Human SCO1 and SCO2 are metallochaperones that are essential for the assembly of the catalytic core of cytochrome c oxidase (COX). SCO1 appears to be involved in the folding and assembly of cytochrome oxidase subunit II, and possibly of other proteins of this subcompartment. It is a 33 kDa protein which displays limited homology to members of the DnaJ family(PMID:14731768). It is also named as SCOD1 and belongs to the SCO1/2 family. It can exist as a homodimer(PMID:16735468). Defects in SCO1 are a cause of mitochondrial complex IV deficiency (MT-C4D).

Applications

Tested applications:	ELISA, WB
Species specificity:	Human; other species not tested.
Calculated SCO1 MW:	301aa,34kd
Observed SCO1 MW:	30kd
Positive WB detected in	Human heart tissue
Recommended dilution:	WB: 1:200-1:2000

Application key: WB = Western blotting, IHC = Immunohistochemistry, IF = Immunofluorescence, IP = Immunoprecipitation

Immunogen information

Immunogen:	Ag3269
GenBank accession number:	BC015504
Gene ID (NCBI):	6341
Full name:	SCO cytochrome oxidase deficient homolog 1 (yeast)

Product information

Purification method:	Antigen affinity purification
Storage:	PBS with 0.1% sodium azide and 50% glycerol pH 7.3. Store at -20°C.