

## SPCS1 Polyclonal Antibody

Catalog number: 11847-1-AP

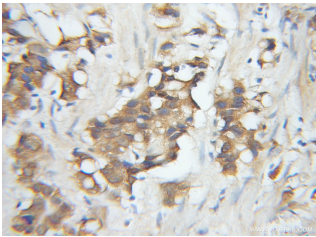
Size: 80 µg/150 µl

Source: Rabbit

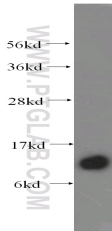
Isotype: IgG

Synonyms:

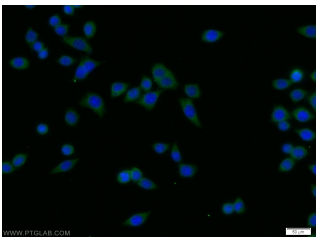
SPCS1; HSPC033, SPase 12 kDa subunit, SPC1, SPC12, SPCS1, YJR010C A



Immunohistochemical of paraffin-embedded human prostate cancer using 11847-1-AP (SPCS1 antibody) at dilution of 1:50 (under 10x lens)



human skin tissue were subjected to SDS PAGE followed by western blot with 11847-1-AP (SPCS1 antibody) at dilution of 1:400



Immunofluorescent analysis of BxPC-3 cells using 11847-1-AP (SPCS1 Antibody) at dilution of 1:25 and Alexa Fluor 488-conjugated AffiniPure Goat Anti-Rabbit IgG(H+L)

### Applications

Tested applications:	ELISA, WB, IHC, IF
Cited applications:	WB
Species specificity:	Human, Mouse, Rat; other species not tested.
Cited species:	Human
Calculated SPCS1 MW:	102aa, 12 kDa
Observed SPCS1 MW:	12 kDa
Positive WB detected in	Human skin tissue, BxPC-3 cells, PC-3 cells
Positive IHC detected in	Human prostate cancer tissue
Positive IF detected in	BxPC-3 cells
Recommended dilution:	WB: 1:500-1:5000 IHC: 1:20-1:200 IF: 1:10-1:100

Application key: WB = Western blotting, IHC = Immunohistochemistry, IF = Immunofluorescence, IP = Immunoprecipitation

### Immunogen information

Immunogen:	Ag2407
GenBank accession number:	BC000884
Gene ID (NCBI):	28972
Full name:	Signal peptidase complex subunit 1 homolog (S. cerevisiae)

### Product information

Purification method:	Antigen affinity purification
Storage:	PBS with 0.1% sodium azide and 50% glycerol pH 7.3. Store at -20°C.