

L-Plastin Polyclonal Antibody

Catalog number: 13025-1-AP

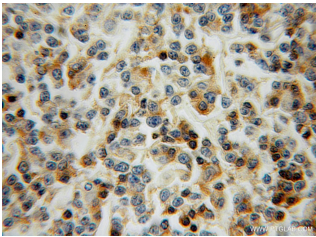
Size: 20 µg/150 µl

Source: Rabbit

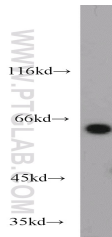
Isotype: IgG

Synonyms:

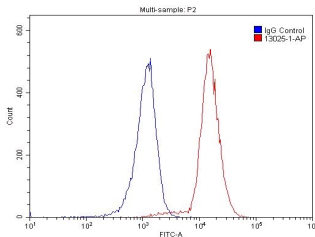
LCP1; L PLASTIN, LCP 1, LCP1,
Lymphocyte cytosolic protein 1,
Plastin 2, PLS2



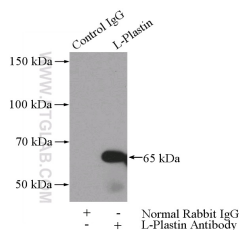
Immunohistochemical of paraffin-embedded human lymphoma using 13025-1-AP(LCP1 antibody) at dilution of 1:50 (under 10x lens)



Jurkat cells were subjected to SDS PAGE followed by western blot with 13025-1-AP(LCP1 antibody) at dilution of 1:1000



1X10⁶ Raji cells were stained with 0.2ug LCP1 antibody (13025-1-AP, red) and control antibody (blue). Fixed with 4% PFA blocked with 3% BSA (30 min). Alexa Fluor 488-conjugated AffiniPure Goat Anti-Rabbit IgG(H+L) with dilution 1:1500.



Applications

Tested applications:	ELISA, WB, IHC, IP, FC
Cited applications:	IHC
Species specificity:	Human, Mouse, Rat; other species not tested.
Cited species:	Monkey
Calculated L-Plastin MW:	627aa, 64 kDa
Observed L-Plastin MW:	64-70 kDa
Positive WB detected in	Jurkat cells, K-562 cells, mouse spleen tissue
Positive IP detected in	Jurkat cells
Positive IHC detected in	Human lymphoma tissue, human small intestine tissue
Positive FC detected in	Raji cells
Recommended dilution:	WB: 1:500-1:5000 IP: 1:500-1:5000 IHC: 1:20-1:200 FC: N/A

Application key: WB = Western blotting, IHC = Immunohistochemistry, IF = Immunofluorescence, IP = Immunoprecipitation

Immunogen information

Immunogen:	Ag3571
GenBank accession number:	BC010271
Gene ID (NCBI):	3936
Full name:	Lymphocyte cytosolic protein 1 (L-plastin)

Product information

Purification method:	Antigen affinity purification
Storage:	PBS with 0.02% sodium azide and 50% glycerol pH 7.3. Store at -20°C.

**IP Result of anti-LCP1
(IP:13025-1-AP, 4ug;
Detection:13025-1-AP 1:1000)
with Jurkat cells lysate
2400ug.**