

## TAP1 Polyclonal Antibody

Catalog number: 11114-1-AP

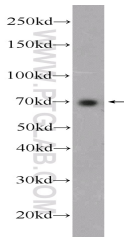
Size: 36 µg/150 µl

Source: Rabbit

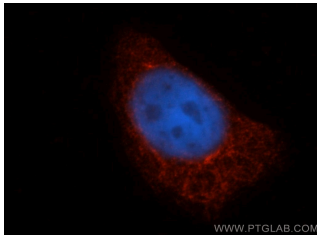
Isotype: IgG

Synonyms:

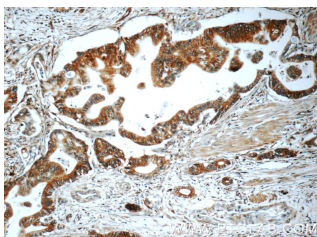
TAP1; ABCB2, Antigen peptide transporter 1, PSF 1, RING 4, RING4, TAP1



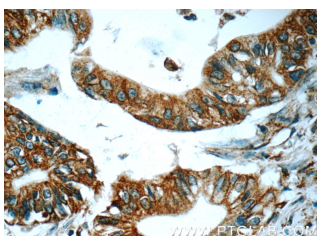
HepG2 cells were subjected to SDS PAGE followed by western blot with 11114-1-AP (TAP1 Antibody) at dilution of 1:1000



Immunofluorescent analysis of HepG2 cells, using TAP1 antibody 11114-1-AP at 1:50 dilution and Rhodamine-labeled goat anti-rabbit IgG (red). Blue pseudocolor = DAPI (fluorescent DNA dye).



Immunohistochemistry of paraffin-embedded human pancreas cancer tissue slide using 11114-1-AP (TAP1 Antibody) at dilution of 1:50 (under 10x lens)



### Background

TAP1, also known as ABCB2, PSF1 or RING4, is a member of the ATP-binding cassette (ABC) family of transmembrane transporters and is an essential component of the major histocompatibility complex (MHC) class I antigen-presenting pathway. TAP is involved in the transport of antigens from the cytoplasm to the endoplasmic reticulum for association with MHC class I molecules. It also acts as a molecular scaffold for the final stage of MHC class I folding. Defects in TAP1 are a cause of bare lymphocyte syndrome type 1 (BLS1). Western blot analysis using this antibody detected a major band around 70-80kD in HeLa cells.

### Applications

Tested applications:	ELISA, IF, WB, IHC, IP
Cited applications:	IF, IHC, WB
Species specificity:	Human, Mouse, Rat; other species not tested.
Cited species:	Human
Calculated TAP1 MW:	81 kDa
Observed TAP1 MW:	70-81 kDa
Positive WB detected in	HepG2 cells, human skeletal muscle tissue, mouse skeletal muscle tissue, mouse spleen tissue, Raji cells
Positive IP detected in	HepG2 cells
Positive IHC detected in	Human pancreas cancer tissue, HeLa cells, human lung cancer tissue
Positive IF detected in	HepG2 cells
Recommended dilution:	WB: 1:500-1:5000 IP: 1:200-1:2000 IHC: 1:20-1:200 IF: 1:20-1:200

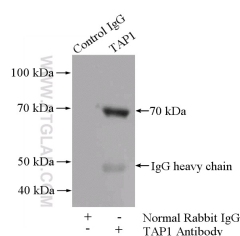
Application key: WB = Western blotting, IHC = Immunohistochemistry, IF = Immunofluorescence, IP = Immunoprecipitation

### Immunogen information

Immunogen:	Ag1619
GenBank accession number:	BC014081
Gene ID (NCBI):	6890
Full name:	Transporter 1, ATP-binding cassette, sub-family B (MDR/TAP)

### Product information

Purification method:	Antigen affinity purification
Storage:	PBS with 0.1% sodium azide and 50% glycerol pH 7.3. Store at -20°C.



**Immunohistochemistry of  
paraffin-embedded human  
pancreas cancer tissue slide  
using 11114-1-AP( TAP1  
Antibody) at dilution of 1:50  
(under 40x lens)**

**IP Result of anti-TAP1  
(IP:11114-1-AP, 4ug;  
Detection:11114-1-AP 1:500)  
with HepG2 cells lysate  
2400ug.**