

CD82 Polyclonal Antibody

Catalog number: 10248-1-AP

Size: 29 µg/150 µl

Source: Rabbit

Isotype: IgG

Synonyms:

CD82; 4F9, C33, C33 antigen,

CD82 antigen, CD82 molecule,

CD82, KAI1, GR15, IA4,

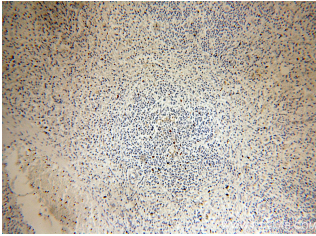
Inducible membrane protein

R2, KAI1, Metastasis suppressor

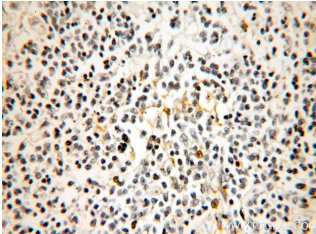
Kangai 1, R2, SAR2, ST6,

Tetraspanin 27, Tspan 27,

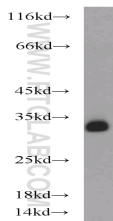
TSPAN27



Immunohistochemical of paraffin-embedded human spleen using 10248-1-AP(CD82 antibody) at dilution of 1:50 (under 10x lens)



Immunohistochemical of paraffin-embedded human spleen using 10248-1-AP(CD82 antibody) at dilution of 1:50 (under 40x lens)



K-562 cells were subjected to SDS PAGE followed by western blot with 10248-1-AP(CD82 antibody) at dilution of 1:500

Background

KAI1 was isolated as a metastasis suppressor gene and was shown to suppress metastatic process in experimental animals. As an evolutionarily conserved gene, it is expressed in many human tissues and encodes a member of a structurally distinct family of leukocyte surface glycoproteins, which are involved in various process in vivo.

Applications

| | |
|--------------------------|---|
| Tested applications: | ELISA, IHC, WB |
| Species specificity: | Human, Mouse, Rat; other species not tested. |
| Calculated CD82 MW: | 30kd |
| Observed CD82 MW: | 30-34 kDa |
| Positive WB detected in | K-562 cells, mouse brain tissue |
| Positive IHC detected in | Human spleen tissue, human tonsillitis tissue |
| Recommended dilution: | WB: 1:200-1:2000 IHC: 1:20-1:200 |

Application key: WB = Western blotting, IHC = Immunohistochemistry, IF = Immunofluorescence, IP = Immunoprecipitation

Immunogen information

| | |
|---------------------------|---------------|
| Immunogen: | Ag0314 |
| GenBank accession number: | BC000726 |
| Gene ID (NCBI): | 3732 |
| Full name: | CD82 molecule |

Product information

| | |
|----------------------|---|
| Purification method: | Antigen affinity purification |
| Storage: | PBS with 0.1% sodium azide and 50% glycerol pH 7.3. Store at -20°C. |